

Datasheet for ABIN6952276

**Macrophage Mannose Receptor 1 Protein (AA 19-1389) (His tag)**[Go to Product page](#)**1** Image

## Overview

Quantity:	100 µg
Target:	Macrophage Mannose Receptor 1 (MRC1)
Protein Characteristics:	AA 19-1389
Origin:	Human
Source:	HEK-293 Cells
Protein Type:	Recombinant
Purification tag / Conjugate:	This Macrophage Mannose Receptor 1 protein is labelled with His tag.

## Product Details

Purity:	>90 % as determined by SDS-PAGE.
Endotoxin Level:	Less than 1.0 EU per µg by the LAL method.

## Target Details

Target:	Macrophage Mannose Receptor 1 (MRC1)
Alternative Name:	CD206 ( <a href="#">MRC1 Products</a> )
Background:	Mrc1 is a conserved checkpoint mediator protein that transduces the replication stress signal to the downstream effector kinase. Mrc1 and its vertebrate homologue Claspin serve as a mediator for replication stress checkpoint signaling, receiving the signal from Mec1/Rad3/ATR sensor kinase and transmitting it to the effector Rad53/Cds1/Chk1 kinase. The loss of mrc1 checkpoint activity results in the aberrant activation of late/dormant origins in the presence of hydroxyurea. Tumor-associated macrophages (TAMs) expressing the multi-ligand endocytic

## Target Details

receptor mannose receptor (CD206/MRC1) contribute to tumor immunosuppression, angiogenesis, metastasis, and relapse.

Molecular Weight: 158.6 kDa

NCBI Accession: [NP\\_002429](#)

## Application Details

Restrictions: For Research Use only

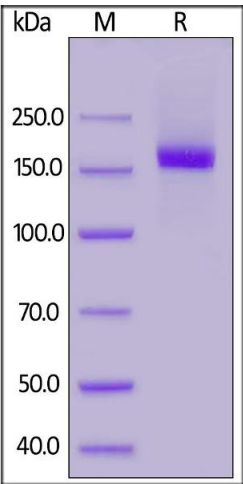
## Handling

Format: Lyophilized

Buffer: PBS, pH 7.4

Storage: -20 °C

## Images



### SDS-PAGE

**Image 1.** Human CD206, His Tag on under reducing (R) condition. The gel was stained overnight with Coomassie Blue. The purity of the protein is greater than 90 % .