

Datasheet for ABIN6952278

CLEC12A Protein (AA 65-265) (His tag)**2** Images[Go to Product page](#)

Overview

Quantity:	50 µg
Target:	CLEC12A
Protein Characteristics:	AA 65-265
Origin:	Human
Source:	HEK-293 Cells
Protein Type:	Recombinant
Purification tag / Conjugate:	This CLEC12A protein is labelled with His tag.

Product Details

Sequence:	AA 65-265
Purity:	>90 % as determined by SDS-PAGE.
Endotoxin Level:	Less than 1.0 EU per µg by the LAL method.

Target Details

Target:	CLEC12A
Alternative Name:	CLEC12A (CLEC12A Products)
Background:	<p>CLEC12A (C-type lectin domain family 12 member A) is also known as CLL1, DCAL2, MICL.</p> <p>Clec12a is an inhibitory receptor for uric acid crystals that regulates inflammation in response to cell death. Cell surface receptor that modulates signaling cascades and mediates tyrosine phosphorylation of target MAP kinases. Evidence of distinct disease propagating stem cells in myelodysplastic syndrome (MDS) has emerged in recent years. The role of CLEC12A in MDS,</p>

Target Details

	however, remains to be elucidated. Furthermore, CLEC12A has been proposed as a promising marker of leukaemic stem cells in AML.
Molecular Weight:	25.6 kDa
NCBI Accession:	NP_612210

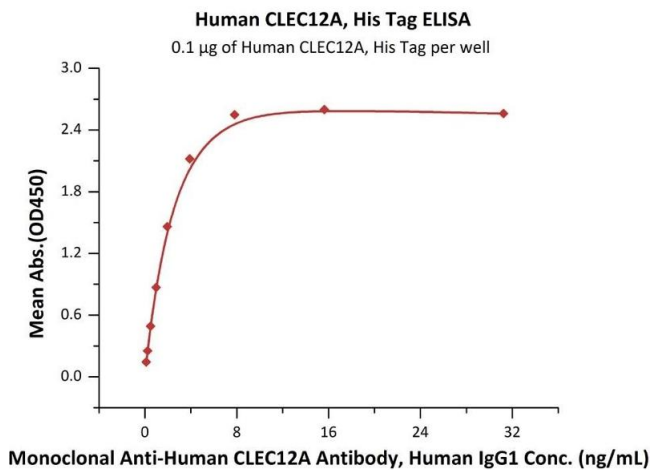
Application Details

Restrictions:	For Research Use only
---------------	-----------------------

Handling

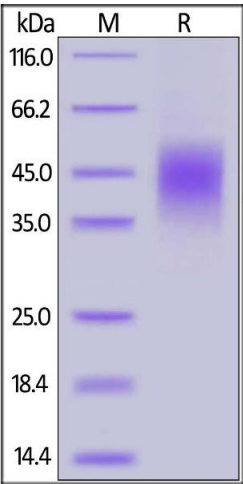
Format:	Lyophilized
Buffer:	PBS, pH 7.4
Handling Advice:	Please avoid repeated freeze-thaw cycles.
Storage:	-20 °C

Validation report #104432 for ELISA (ELISA)



ELISA

Image 1. Immobilized Human CLEC12A, His Tag (ABIN6951021,ABIN6952278) at 1 µg/mL (100 µL/well) can bind Monoclonal A CLEC12A Antibody, Human IgG1 with a linear range of 0.1-4 ng/mL (QC tested).



SDS-PAGE

Image 2. Human CLEC12A, His Tag on under reducing (R) condition. The gel was stained overnight with Coomassie Blue. The purity of the protein is greater than 90 % .