

Datasheet for ABIN6952281  
**C5 Protein (AA 19-1678) (His tag)**



[Go to Product page](#)

1 Image

## Overview

Quantity:	100 µg
Target:	C5
Protein Characteristics:	AA 19-1678
Origin:	Rabbit
Source:	HEK-293 Cells
Protein Type:	Recombinant
Purification tag / Conjugate:	This C5 protein is labelled with His tag.

## Product Details

Purity:	>90 % as determined by SDS-PAGE.
Endotoxin Level:	Less than 1.0 EU per µg by the LAL method.

## Target Details

Target:	C5
Alternative Name:	Complement C5 ( <a href="#">C5 Products</a> )
Background:	Derived from proteolytic degradation of complement C5, C5 anaphylatoxin is a mediator of local inflammatory process. C5 precursor is first processed by the removal of 4 basic residues, forming two chains, beta and alpha, linked by a disulfide bond. C5 convertase activates C5 by cleaving the alpha chain, releasing C5a anaphylatoxin and generating C5b (beta chain + alpha' chain). Activation of C5 by a C5 convertase initiates the spontaneous assembly of the late complement components, C5-C9, into the membrane attack complex. C5b has a transient

## Target Details

binding site for C6. The C5b-C6 complex is the foundation upon which the lytic complex is assembled. The C5a anaphylatoxin interacts with C5AR1 and tick complement inhibitor. C5a is also a potent chemokine which stimulates the locomotion of polymorphonuclear leukocytes and directs their migration toward sites of inflammation.

Molecular Weight: 73.8 kDa ( $\beta$  chain) & 111.9 kDa ( $\alpha$  chain)

NCBI Accession: [XP\\_008271599](#)

Pathways: [Complement System](#), [Carbohydrate Homeostasis](#)

## Application Details

Restrictions: For Research Use only

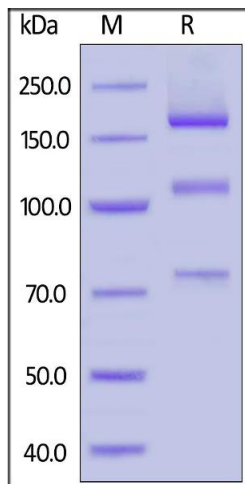
## Handling

Format: Lyophilized

Buffer: PBS, pH 7.4

Storage: -20 °C

## Images



### SDS-PAGE

**Image 1.** Rabbit Complement C5, His Tag on under reducing (R) condition. The gel was stained overnight with Coomassie Blue. The purity of the protein is greater than 90 %.