

Datasheet for ABIN6952745

SARS-CoV-2 NSP3 Protein (AA 1564-1878) (His tag)[Go to Product page](#)**1** Image

Overview

Quantity:	100 µg
Target:	SARS-CoV-2 NSP3 (NSP3)
Protein Characteristics:	AA 1564-1878
Origin:	SARS Coronavirus-2 (SARS-CoV-2)
Source:	Escherichia coli (E. coli)
Protein Type:	Recombinant
Purification tag / Conjugate:	This SARS-CoV-2 NSP3 protein is labelled with His tag.
Application:	SDS-PAGE (SDS)

Product Details

Sequence:	EVRTIKVFTT VDNINLHTQV VDMSMTYGQQ FGPTYLDGAD VTKIKPHNSH EGKTFYVLPN DDTLRVEAFE YYHTTDPSTL GRYMSALNHT KWKYPQVNG LTSIKWADNN CYLATALLTL QQIELKFNPP ALQDAYRAR AGEAANFCAL ILAYCNKTVG ELGDVRETMS YLFQHANLDS CKRVLNVVCK TCGQQTTLK GVEAVMYMGT LSYEQFKKGV QIPCTCGKQA TKYLVQQESP FVMMSAPPAQ YELKHGTFTC ASEYTGNYQC GHYKHITSKE TLYCIDGALL TKSSEYKGPI TDVFKENSY TTTIK
Specificity:	Glu1564-Lys1878
Characteristics:	Recombinant 2019-nCoV papain-like protease is produced by E. coli expression system. The target protein is expressed with sequence (Glu1564-Lys1878) of 2019-ncov papain-like protease (Accession #YP_009725299.1) fused with an 6xHis tag at the N-terminus.
Purity:	> 90 % by SDS-PAGE.

Product Details

Sterility:	0.22 µm filtered
Endotoxin Level:	< 1.0 EU/µg of the protein by LAL method.

Target Details

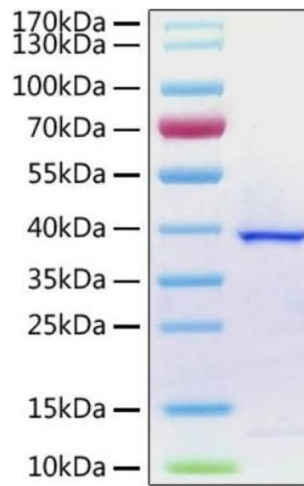
Target:	SARS-CoV-2 NSP3 (NSP3)
Abstract:	NSP3 Products
Target Type:	Viral Protein
Background:	PLPro,PL-PRO,pp1a,Papain-like Protease,Replicase polyprotein 1a,ORF1a polyprotein,Plpro,COVID-19

Application Details

Restrictions:	For Research Use only
---------------	-----------------------

Handling

Format:	Liquid
Concentration:	0.546 mg/mL
Buffer:	Supplied as a 0.22 µm filtered solution in 20 mM Tris,20 % Glycerol,10 mM β-Me, pH 7.5.
Handling Advice:	Avoid repeated freeze-thaw cycles.
Storage:	-80 °C
Storage Comment:	This product is stable at ≤ -70°C for up to 1 year from the date of receipt. For optimal storage, aliquot into smaller quantities after centrifugation and store at recommended temperature.Avoid repeated freeze-thaw cycles.



SDS-PAGE

Image 1. Recombinant 2019-nCoV papain-like protease with His tag was determined by SDS-PAGE with Coomassie Blue, showing a band at 38 kDa.