

Datasheet for ABIN6952962
anti-SARS-CoV-2 Spike antibody

8 Images

[Go to Product page](#)

Overview

Quantity:	0.1 mg
Target:	SARS-CoV-2 Spike
Reactivity:	SARS Coronavirus-2 (SARS-CoV-2), SARS CoV-2 Beta, SARS CoV-2 Gamma, SARS CoV-2 Alpha
Host:	Rabbit
Clonality:	Polyclonal
Application:	ELISA, Western Blotting (WB)

Product Details

Immunogen:	Anti-SARS-CoV-2 (COVID-19, 2019-nCoV) Spike antibody was raised against a peptide corresponding to 12 amino acids near the center of SARS-CoV-2 (COVID-19, 2019-nCoV) Spike glycoprotein.
Isotype:	IgG
Predicted Reactivity:	Predicted reactivity based on immunogen sequence: SARS-CoV Spike proteins: (25%)
Purification:	SARS-CoV-2 (COVID-19, 2019-nCoV) Spike Antibody is affinity chromatography purified via peptide column.

Target Details

Target:	SARS-CoV-2 Spike
Abstract:	SARS-CoV-2 Spike Products
Target Type:	Viral Protein
Background:	Coronavirus disease 2019 (COVID-19), formerly known as 2019-nCoV acute respiratory disease,

Target Details

is an infectious disease caused by SARS-CoV-2, a virus closely related to the SARS virus. The disease is the cause of the 2019-20 coronavirus outbreak.

Gene ID: 43740568

UniProt: [P0DTC2](#)

Application Details

Application Notes: SARS-CoV-2 (COVID-19, 2019-nCoV) Spike antibody can be used for the detection of SARS-CoV-2 (COVID-19, 2019-nCoV) Spike protein in ELISA. It will detect 4 ng of free peptide at 1 µg/mL.

Restrictions: For Research Use only

Handling

Format: Liquid

Concentration: 1 mg/mL

Buffer: SARS-CoV-2 (COVID-19, 2019-nCoV) Spike Antibody is supplied in PBS containing 0.02 % sodium azide.

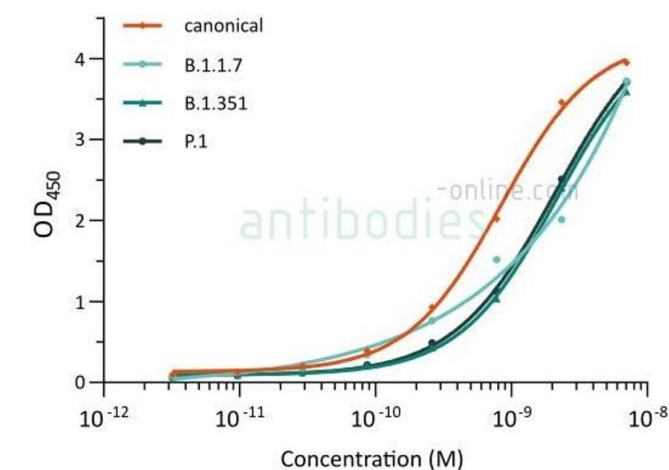
Preservative: Sodium azide

Precaution of Use: This product contains Sodium azide: a POISONOUS AND HAZARDOUS SUBSTANCE which should be handled by trained staff only.

Storage: 4 °C, -20 °C

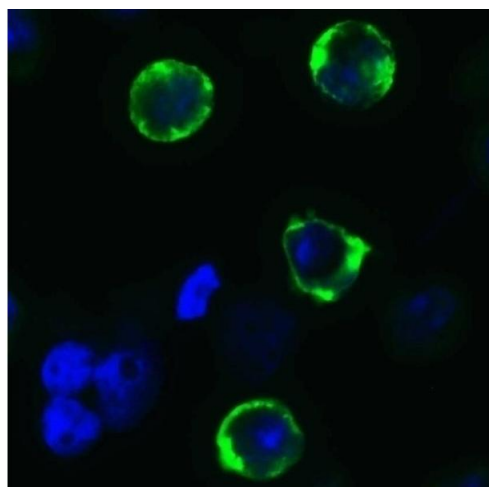
Storage Comment: SARS-CoV-2 (COVID-19, 2019-nCoV) Spike antibody can be stored at 4°C for three months and -20°C, stable for up to one year. As with all antibodies care should be taken to avoid repeated freeze thaw cycles. Antibodies should not be exposed to pro

Expiry Date: 12 months



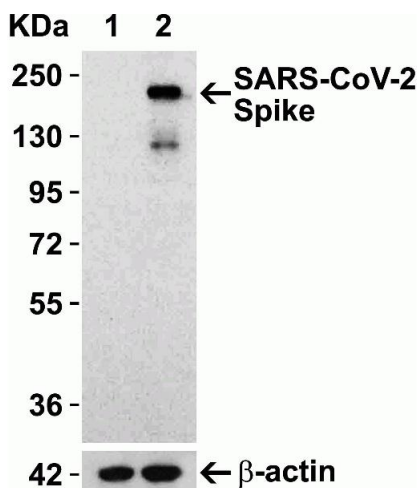
ELISA

Image 1. Direct ELISA of SARS-CoV-2 variant proteins with anti-SARS-CoV-2 Spike S1 antibody ABIN6952962. Plates were coated with 0.457-1000 ng/mL SARS-CoV-2 full length spike wt protein ABIN6952670 or S protein from variants B.1.1.7 alpha ABIN6963742, B.1.351 beta ABIN6963740, or P.1 gamma ABIN6964443 at 4 °C ON. Incubation with detection antibody ABIN6990084 at 0.1 µg/ml at RT for 1h, followed by incubation with secondary goat anti-rabbit anti-rabbit HRP diluted 1:20,000 at RT for 1h. ABIN6952962 recognizes the SARS-CoV-2 S protein of all four tested variants, but those of variants B.1.1.7 alpha, B.1.351 beta, and P.1 gamma are bound less. The immunogen of ABIN6952962 includes P681, which is mutated to P681H in all the S protein of variant B.1.1.7 alpha.



Immunofluorescence

Image 2. Immunofluorescence Validation of SARS-CoV-2 (COVID-19) Spike (cleavage site) in 293 Transfected Cells. Immunofluorescent analysis of 4 % paraformaldehyde-fixed Spike transfected 293 cells labeling SARS-CoV-2 (COVID-19) Spike (cleavage site) with ABIN6952962 at 10 mg/mL, followed by goat anti-rabbit IgG secondary antibody at 1/500 dilution (green) and DAPI staining (blue).



Western Blotting

Image 3. Overexpression Validation in Spike Transfected 293 Cells. Loading: 10 µg per lane of 293 cell lysate. Antibodies: SARS-CoV-2 (COVID-19) Spike (cleavage site), ABIN6952962 (0.5 µg/mL), 1h incubation at RT in 5 % NFDN/TBST. Secondary: Goat anti-rabbit IgG HRP conjugate at 1:10000 dilution. Lane 1: WT 293 cells and Lane 2: SARS-CoV-2 Spike overexpressed 293 cells

Images

Please check the [product details page](#) for more images. Overall 8 images are available for ABIN6952962.