



[Go to Product page](#)

Datasheet for ABIN6959572

## SLC2A2 ELISA Kit

1 Image

2 Publications

### Overview

Quantity:	96 tests
Target:	SLC2A2
Reactivity:	Rat
Method Type:	Sandwich ELISA
Detection Range:	0.78 ng/mL - 50 ng/mL
Minimum Detection Limit:	0.78 ng/mL
Application:	ELISA

### Product Details

Purpose:	The kit is a sandwich enzyme immunoassay for in vitro quantitative measurement of GLUT2 in rat tissue homogenates, cell lysates.
Sample Type:	Cell Lysate, Tissue Homogenate
Analytical Method:	Quantitative
Detection Method:	Colorimetric
Specificity:	This assay has high sensitivity and excellent specificity for detection of Glucose Transporter 2 (GLUT2)
Sensitivity:	0.26 ng/mL
Components:	<ul style="list-style-type: none"><li>• Pre-coated, ready to use 96-well strip plate, flat bottom</li><li>• Plate sealer for 96 wells</li><li>• Reference Standard</li><li>• Standard Diluent</li></ul>

## Product Details

---

- Detection Reagent A
- Detection Reagent B
- Assay Diluent A
- Assay Diluent B
- Reagent Diluent (if Detection Reagent is lyophilized)
- TMB Substrate
- Stop Solution
- Wash Buffer (30 x concentrate)
- Instruction manual

## Target Details

---

Target:	SLC2A2
Alternative Name:	Glucose Transporter 2 (GLUT2) ( <a href="#">SLC2A2 Products</a> )
Pathways:	<a href="#">Warburg Effect</a>

## Application Details

---

Comment:	<p>Information on standard material:</p> <p>The standard might be recombinant protein or natural protein, that will depend on the specific kit. Moreover, the expression system is E.coli or yeast or mammal cell. There is 0.05% proclin 300 in the standard as preservative.</p> <p>Information on reagents:</p> <p>The stop solution used in the kit is sulfuric acid with concentration of 1 mol/L. And the wash solution is TBS. The standard diluent contains 0.02 % sodium azide, assay diluent A and assay diluent B contain 0.01% sodium azide. Some kits can contain is BSA in them.</p> <p>Information on antibodies:</p> <p>The provided antibodies and their host vary in different kits.</p>
Sample Volume:	100 µL
Assay Time:	3 h
Plate:	Pre-coated
Protocol:	<ol style="list-style-type: none"><li>1. Prepare all reagents, samples and standards,</li><li>2. Add 100µL standard or sample to each well. Incubate 1 hours at 37 °C,</li><li>3. Aspirate and add 100µL prepared Detection Reagent A. Incubate 1 hour at 37 °C,</li></ol>

4. Aspirate and wash 3 times,
5. Add 100µL prepared Detection Reagent B. Incubate 30 minutes at 37 °C,
6. Aspirate and wash 5 times,
7. Add 90µL Substrate Solution. Incubate 10-20 minutes at 37 °C,
8. Add 50µL Stop Solution. Read at 450nm immediately.

---

### Reagent Preparation:

1. Bring all kit components and samples to room temperature (18-25 °C) before use. If the kit will not be used up in one time, please only take out strips and reagents for present experiment, and leave the remaining strips and reagents in required condition.
2. Standard - Reconstitute the Standard with 1.0 mL of Standard Diluent, keep for 10 minutes at room temperature, shake gently (not to foam). The concentration of the standard in the stock solution is 100 ng/mL. Firstly dilute the stock solution to 50 ng/mL and the diluted standard serves as the highest standard (50 ng/mL). Then prepare 7 tubes containing 0.5 mL Standard Diluent and use the diluted standard to produce a double dilution series. Mix each tube thoroughly before the next transfer. Set up 7 points of diluted standard such as 50 ng/mL, 25 ng/mL, 12.5 ng/mL, 6.25 ng/mL, 3.12 ng/mL, 1.56 ng/mL, 0.78 ng/mL, and the last microcentrifuge tube with Standard Diluent is the blank as 0 ng/mL.
3. Reagent B - Briefly spin or centrifuge the stock Detection A and Detection B before use. Dilute them to the working concentration 100-fold with Assay Diluent A and B, respectively.
4. Wash Solution - Dilute 20 mL of Wash Solution concentrate (30x) with 580 mL of deionized or distilled water to prepare 600 mL of Wash Solution (1x).
5. TMB substrate - Aspirate the needed dosage of the solution with sterilized tips and do not dump the residual solution into the vial again.

### Note:

1. Making serial dilution in the wells directly is not permitted.
2. Prepare standards within 15 minutes before assay. Please do not dissolve the reagents at 37 °C directly.
3. Please carefully reconstitute Standards or working Detection Reagent A and B according to the instruction, and avoid foaming and mix gently until the crystals are completely dissolved. To minimize imprecision caused by pipetting, use small volumes and ensure that pipettors are calibrated. It is recommended to suck more than 10µL for one pipetting.
4. The reconstituted Standards, Detection Reagent A and Detection Reagent B can be used only once.
5. If crystals have formed in the Wash Solution concentrate (30x), warm to room temperature and mix gently until the crystals are completely dissolved.
6. Contaminated water or container for reagent preparation will influence the detection result.

---

### Sample Preparation:

- It is recommended to use fresh samples without long storage, otherwise protein degradation and denaturation may occur in these samples, leading to false results. Samples should therefore be stored for a short period at 2 - 8 °C or aliquoted at -20 °C (≤1 month) or -80 °C (≤ 3 months). Repeated freeze-thaw cycles should be avoided. Prior to assay, the frozen samples should be slowly thawed and centrifuged to remove precipitates.
- If the sample type is not specified in the instructions, a preliminary test is necessary to

## Application Details

---

determine compatibility with the kit.

- If a lysis buffer is used to prepare tissue homogenates or cell culture supernatant, there is a possibility of causing a deviation due to the introduced chemical substance. The recommended dilution factor is for reference only.
- Please estimate the concentration of the samples before performing the test. If the values are not in the range of the standard curve, the optimal sample dilution for the particular experiment has to be determined. Samples should then be diluted with PBS (pH =7.0-7.2).

---

Assay Precision:	Intra-assay Precision (Precision within an assay): 3 samples with low, middle and high level of target were tested 20 times on one plate, respectively. Inter-assay Precision (Precision between assays): 3 samples with low, middle and high level of target were tested on 3 different plates, 8 replicates in each plate. CV(%) = SD/meanX100 Intra-Assay: CV < 10% Inter-Assay: CV < 12%
------------------	--

---

Restrictions:	For Research Use only
---------------	-----------------------

## Handling

---

Precaution of Use:	The Stop Solution suggested for use with this kit is an acid solution. Wear eye, hand, face, and clothing protection when using this material.
Storage:	4 °C/-20 °C
Storage Comment:	1. For unopened kit: All reagents should be stored according to the labels on the vials. The Standard, Detection Reagent A, Detection Reagent B, and 96-well Strip Plate should be stored at -20 °C upon receipt, while the other reagents should be stored at 4 °C. 2. For opened kits: the remaining reagents must be stored according to the above storage conditions. In addition, please return the unused wells to the foil pouch containing the desiccant and seal the foil pouch with the zipper.
Expiry Date:	6 months

## Publications

---

Product cited in:	Yamaç, Kılıç: "Effect of statins on sirtuin 1 and endothelial nitric oxide synthase expression in young patients with a history of premature myocardial infarction." in: <b>Türk Kardiyoloji Dernegi arsivi : Turk Kardiyoloji Derneginin yayin organidir</b> , Vol. 46, Issue 3, pp. 205-215, (2018) ( <a href="#">PubMed</a> ).
-------------------	---

## Publications

---

Luo, Li, Zhou, Zhao, Chen, Liu, Chen, Zheng, Ma, Gao, Yang: "Mutant DD genotype of NFKB1 gene is associated with the susceptibility and severity of coronary artery disease." in: **Journal of molecular and cellular cardiology**, Vol. 103, pp. 56-64, (2017) ([PubMed](#)).

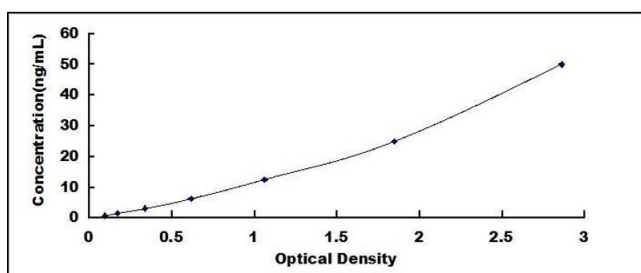
Yin, Feng, Zhao, Zhao, Yua, Xu, Che: "SIRT1 inhibits releases of HMGB1 and HSP70 from human umbilical vein endothelial cells caused by IL-6 and the serum from a preeclampsia patient and protects the cells from death." in: **Biomedicine & pharmacotherapy**, Vol. 88, pp. 449-458, (2017) ([PubMed](#)).

Liao, Huang, Fan, Li, Yang: "Endothelial nitric oxide synthase deficiency influences normal cell cycle progression and apoptosis in trabecular meshwork cells." in: **International journal of ophthalmology**, Vol. 9, Issue 6, pp. 799-803, (2016) ([PubMed](#)).

Yavuzer, Yavuzer, Cengiz, Erman, Alt?parmak, Korkmazer, Balci, Simsek, Yald?ran, Karter, Uzun: "Endothelial damage in white coat hypertension: role of lectin-like oxidized low-density lipoprotein-1." in: **Journal of human hypertension**, Vol. 29, Issue 2, pp. 92-8, (2015) ([PubMed](#)).

## Images

---



### ELISA

**Image 1.** Typical standard curve