

Datasheet for ABIN6961043  
**anti-BCMA antibody (AA 1-54)**

## 8 Images

[Go to Product page](#)

## Overview

Quantity:	100 µg
Target:	BCMA (TNFRSF17)
Binding Specificity:	AA 1-54
Reactivity:	Human
Host:	Rabbit
Clonality:	Monoclonal
Conjugate:	This BCMA antibody is un-conjugated
Application:	ELISA, Flow Cytometry (FACS), Immunoprecipitation (IP), Immunofluorescence (IF)

## Product Details

Immunogen:	Recombinant human BCMA (Met1-Ala54) (ABIN6961074) produced by using human HEK293 cells
Clone:	DM4
Isotype:	IgG
Purification:	Purified from cell culture supernatant by affinity chromatography

## Target Details

Target:	BCMA (TNFRSF17)
Alternative Name:	BCMA ( <a href="#">TNFRSF17 Products</a> )
Background:	The protein encoded by this gene is a member of the TNF-receptor superfamily. This receptor is

## Target Details

preferentially expressed in mature B lymphocytes, and may be important for B cell development and autoimmune response. This receptor has been shown to specifically bind to the tumor necrosis factor (ligand) superfamily, member 13b (TNFSF13B/TALL-1/BAFF), and to lead to NF-kappaB and MAPK8/JNK activation. This receptor also binds to various TRAF family members, and thus may transduce signals for cell survival and proliferation.

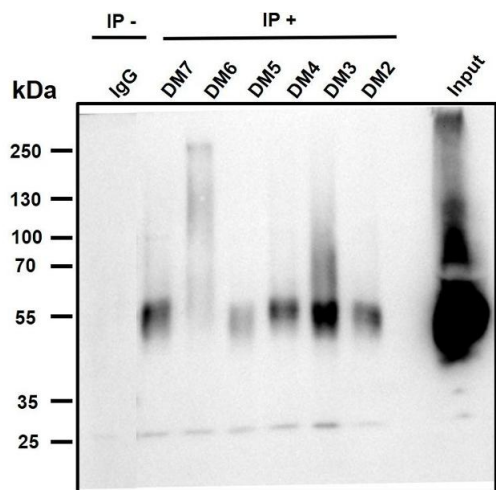
Molecular Weight:	20 kDa
Gene ID:	608
UniProt:	<a href="#">Q02223</a>

## Application Details

Application Notes:	Flow Cyt 1/100, IP 1/30
Restrictions:	For Research Use only

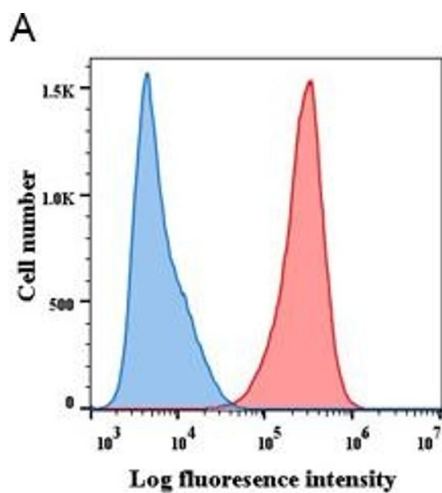
## Handling

Format:	Lyophilized
Buffer:	50 % Glycerol, PBS, pH 7.4, 0.1 % BSA, 0.1 % Procline 300
Preservative:	ProClin
Precaution of Use:	This product contains ProClin: a POISONOUS AND HAZARDOUS SUBSTANCE which should be handled by trained staff only.
Storage:	-20 °C,-80 °C
Storage Comment:	Store at -20°C to -80°C for 12 months in lyophilized form. After reconstitution, if not intended for use within a month, aliquot and store at -80°C (Avoid repeated freezing and thawing). Lyophilized proteins are shipped at ambient temperature.
Expiry Date:	12 months



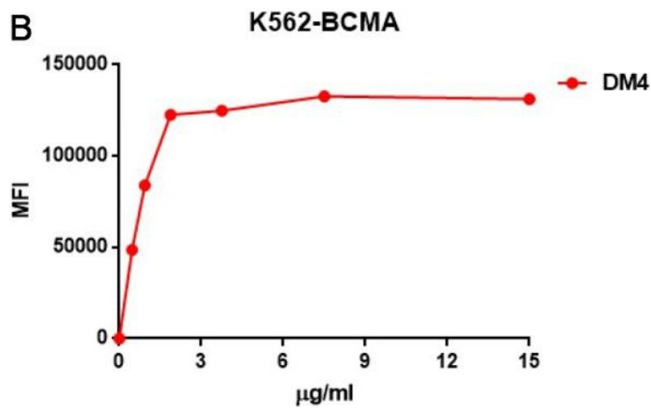
### Immunoprecipitation

**Image 1.** Immunoprecipitation analysis. Cellular overexpression lysates (made from HEK293F cells transfected with FLAG tagged human BCMA full length gene) were pre-incubated with 6 different rabbit clones and negative control IgG. The immunocomplexes were further pulled down by protein A beads, fractionated, and blotted with mouse anti-FLAG monoclonal antibody.



### Flow Cytometry

**Image 2.** A. Flow cytometry analysis with anti-BCMA (DM4) on K562-BCMA (Red histogram) (K562 cells stably transduced by human BCMA full length gene) and K562 (Negative control cell line) (Blue histogram).



### Flow Cytometry

**Image 3.** B. Flow cytometry data of serially titrated anti-BCMA (DM4). The Y-axis represents the mean fluorescence intensity (MFI) while the X-axis represents the concentration of IgG used.

Please check the [product details page](#) for more images. Overall 8 images are available for ABIN6961043.