



Datasheet for ABIN6961048
anti-CD22 antibody (AA 20-687)



[Go to Product page](#)

2 Images

Overview

Quantity:	100 µg
Target:	CD22
Binding Specificity:	AA 20-687
Reactivity:	Human
Host:	Rabbit
Clonality:	Monoclonal
Conjugate:	This CD22 antibody is un-conjugated
Application:	Flow Cytometry (FACS), Western Blotting (WB), ELISA, Immunofluorescence (IF), Immunoprecipitation (IP)

Product Details

Immunogen:	Recombinant human CD22 (Asp20-Arg687) (ABIN6961078) produced by using human HEK293 cells
Clone:	DM13
Isotype:	IgG
Purification:	Purified from cell culture supernatant by affinity chromatography

Target Details

Target:	CD22
Alternative Name:	CD22 (CD22 Products)

Target Details

Background: CD22 (CD22 Molecule) is a Protein Coding gene. Diseases associated with CD22 include Refractory Hematologic Cancer and Hairy Cell Leukemia. Among its related pathways are Downstream signaling events of B Cell Receptor (BCR) and Hematopoietic cell lineage. Gene Ontology (GO) annotations related to this gene include carbohydrate binding. An important paralog of this gene is SIGLEC1.

Molecular Weight: 95 kDa

Gene ID: 933

UniProt: [P20273](#)

Application Details

Application Notes: Flow Cyt 1/100

Restrictions: For Research Use only

Handling

Format: Lyophilized

Buffer: 50 % Glycerol, PBS, pH 7.4, 0.1 % BSA, 0.1 % Procline 300

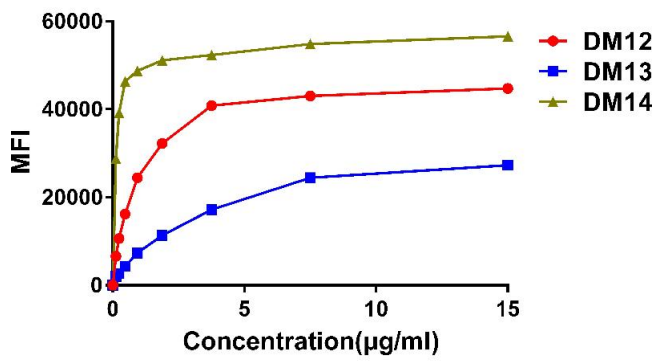
Preservative: ProClin

Precaution of Use: This product contains ProClin: a POISONOUS AND HAZARDOUS SUBSTANCE which should be handled by trained staff only.

Storage: -20 °C,-80 °C

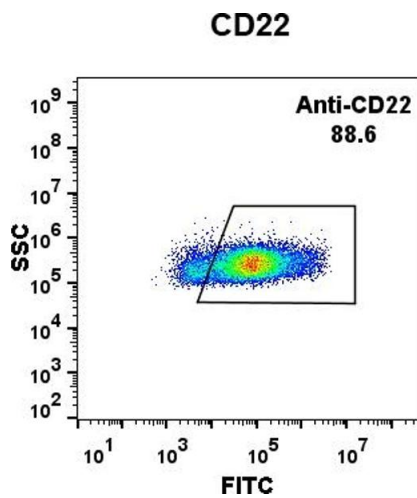
Storage Comment: Store at -20°C to -80°C for 12 months in lyophilized form. After reconstitution, if not intended for use within a month, aliquot and store at -80°C (Avoid repeated freezing and thawing).
Lyophilized proteins are shipped at ambient temperature.

Expiry Date: 12 months



Flow Cytometry

Image 1. Flow cytometry data of serially titrated Rabbit anti-CD22 monoclonal antibody (clone: DM13) on Raji cells. The Y-axis represents the mean fluorescence intensity (MFI) while the X-axis represents the concentration of IgG used.



Flow Cytometry

Image 2. Expi 293 cell line transfected with irrelevant protein (left) and human CD22 (right) were surface stained with Rabbit anti-CD22 monoclonal antibody 1 µg/mL (clone: DM13) followed by Alexa 488-conjugated anti-rabbit IgG secondary antibody.