



[Go to Product page](#)

Datasheet for ABIN6961060
anti-CD38 antibody (AA 43-300)

4 Images

Overview

Quantity:	100 µg
Target:	CD38
Binding Specificity:	AA 43-300
Reactivity:	Human
Host:	Rabbit
Clonality:	Monoclonal
Conjugate:	This CD38 antibody is un-conjugated
Application:	Flow Cytometry (FACS), ELISA

Product Details

Immunogen:	Recombinant human CD38 (Val43-Ile300) (ABIN6961077) produced by using human HEK293 cells
Clone:	DM28
Isotype:	IgG
Purification:	Purified from cell culture supernatant by affinity chromatography

Target Details

Target:	CD38
Abstract:	CD38 Products
Background:	CD antigen CD38 is also known as ADP-ribosyl cyclase 1, which belongs to the ADP-ribosyl

Target Details

cyclase family. CD38 is expressed at high levels in pancreas, liver, kidney, brain, testis, ovary, placenta, malignant lymphoma and neuroblastoma. CD38 is a multifunctional ectoenzyme that catalyzes the synthesis and hydrolysis of cyclic ADP-ribose (cADPR) from NAD⁺ to ADP-ribose. These reaction products are essential for the regulation of intracellular Ca²⁺. The loss of CD38 function is associated with impaired immune responses, metabolic disturbances, and behavioral modifications. The CD38 protein is a marker of cell activation. It has been connected to HIV infection, leukemias, myelomas, solid tumors, type II diabetes mellitus and bone metabolism. CD38 has been used as a prognostic marker in leukemia.

Molecular Weight: 34 kDa

Gene ID: 952

UniProt: [P28907](#)

Application Details

Application Notes: ELISA 1/5000-10000, Flow Cyt 1/100

Restrictions: For Research Use only

Handling

Format: Lyophilized

Buffer: 50 % Glycerol, PBS, pH 7.4, 0.1 % BSA, 0.1 % Procline 300

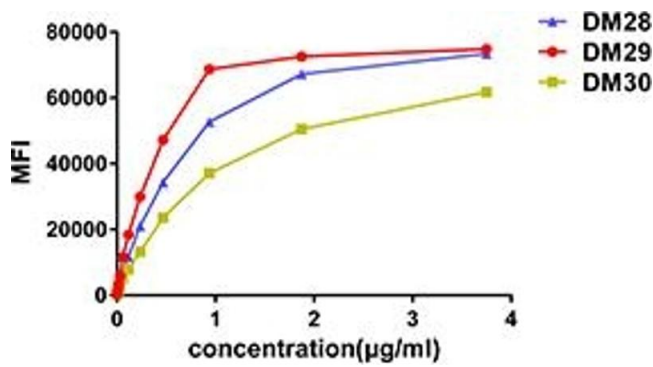
Preservative: ProClin

Precaution of Use: This product contains ProClin: a POISONOUS AND HAZARDOUS SUBSTANCE which should be handled by trained staff only.

Storage: -20 °C,-80 °C

Storage Comment: Store at -20°C to -80°C for 12 months in lyophilized form. After reconstitution, if not intended for use within a month, aliquot and store at -80°C (Avoid repeated freezing and thawing).
Lyophilized proteins are shipped at ambient temperature.

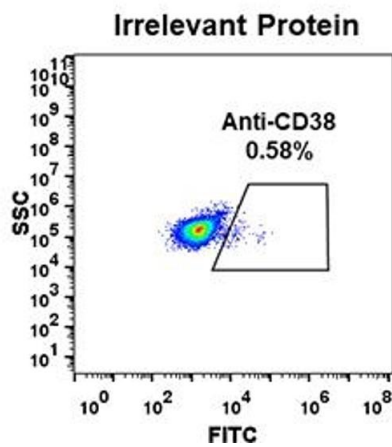
Expiry Date: 12 months



Affinity Measurement

Image 1. Affinity ranking of different Rabbit anti-CD38 mAb clones by titration of different concentration onto Raji cells. The Y-axis represents the mean fluorescence intensity (MFI) while the X-axis represents the concentration of IgG used.

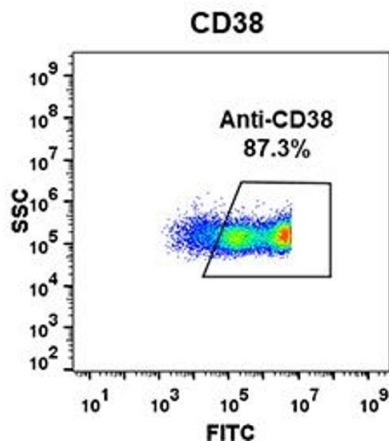
A



Flow Cytometry

Image 2. Expi 293 cell line transfected with irrelevant protein were surface stained with Rabbit anti-CD38 monoclonal antibody 1 µg/mL (clone: DM28) followed by Alexa 488-conjugated anti-rabbit IgG secondary antibody.

B



Flow Cytometry

Image 3. Expi 293 cell line transfected with human CD38 were surface stained with Rabbit anti-CD38 monoclonal antibody 1 µg/mL (clone: DM28) followed by Alexa 488-conjugated anti-rabbit IgG secondary antibody.

Please check the [product details page](#) for more images. Overall 4 images are available for ABIN6961060.