



[Go to Product page](#)

Datasheet for ABIN6961066
anti-IL3RA antibody (AA 19-305)

4 Images

Overview

Quantity:	100 µg
Target:	IL3RA
Binding Specificity:	AA 19-305
Reactivity:	Human
Host:	Rabbit
Clonality:	Monoclonal
Application:	Flow Cytometry (FACS), ELISA

Product Details

Immunogen:	Recombinant human CD123(Thr19-Arg305) (ABIN6961076) produced by using human HEK293 cells
Clone:	DM31
Isotype:	IgG
Purification:	Purified from cell culture supernatant by affinity chromatography

Target Details

Target:	IL3RA
Alternative Name:	CD123 (IL3RA Products)
Background:	Interleukin 3 receptor alpha (low affinity) (IL3RA), also known as CD123 (Cluster of Differentiation 123) is a 70-kD glycoprotein member of the hematopoietin receptor superfamily. This protein associates with a beta subunit common to the receptors for IL-5 and granulocyte-

Target Details

macrophage colony-stimulating factor (GM-CSF) to form a high-affinity receptor for IL-3. The interleukin-3 receptor α chain (CD123) has been identified as a potential immunotherapeutic target because it is overexpressed in AML compared with normal hematopoietic stem cells.

Molecular Weight: 39 kDa

Gene ID: 3563

UniProt: [P26951](#)

Pathways: [JAK-STAT Signaling](#)

Application Details

Application Notes: ELISA 1/5000-10000, Flow Cyt 1/100

Restrictions: For Research Use only

Handling

Format: Lyophilized

Buffer: 50 % Glycerol, PBS, pH 7.4, 0.1 % BSA, 0.1 % Procline 300

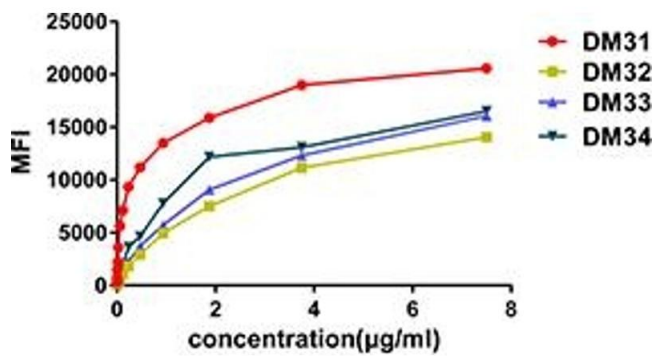
Preservative: ProClin

Precaution of Use: This product contains ProClin: a POISONOUS AND HAZARDOUS SUBSTANCE which should be handled by trained staff only.

Storage: -20 °C, -80 °C

Storage Comment: Store at -20°C to -80°C for 12 months in lyophilized form. After reconstitution, if not intended for use within a month, aliquot and store at -80°C (Avoid repeated freezing and thawing).
Lyophilized proteins are shipped at ambient temperature.

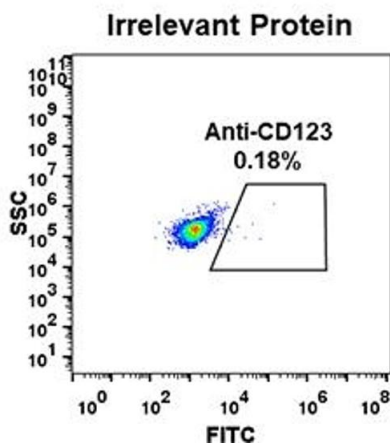
Expiry Date: 12 months



Affinity Measurement

Image 1. Affinity ranking of different Rabbit anti-CD123 mAb clones by titration of different concentration onto THP-1 cells. The Y-axis represents the mean fluorescence intensity (MFI) while the X-axis represents the concentration of IgG used.

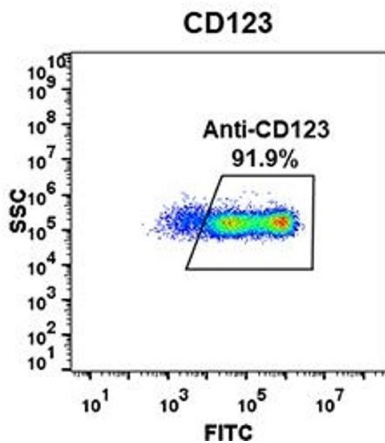
A



Flow Cytometry

Image 2. Expi 293 cell line transfected with irrelevant protein were surface stained with Rabbit anti-CD123 monoclonal antibody 1 µg/mL (clone: DM31) followed by Alexa 488-conjugated anti-rabbit IgG secondary antibody.

B



Flow Cytometry

Image 3. Expi 293 cell line transfected with human CD123 were surface stained with Rabbit anti-CD123 monoclonal antibody 1 µg/mL (clone: DM31) followed by Alexa 488-conjugated anti-rabbit IgG secondary antibody.

Please check the [product details page](#) for more images. Overall 4 images are available for ABIN6961066.