



[Go to Product page](#)

Datasheet for ABIN6961075

## Catalase Protein (CAT) (Fc Tag,His tag)

### 1 Image

#### Overview

Quantity:	100 µg
Target:	Catalase (CAT)
Origin:	Human
Source:	HEK-293 Cells
Protein Type:	Recombinant
Purification tag / Conjugate:	This Catalase protein is labelled with Fc Tag,His tag.
Application:	Western Blotting (WB), ELISA

#### Product Details

Purpose:	Recombinant human CS1 protein with C-terminal human Fc and 6xHis tag
Specificity:	CS1 (Ser23-Met226) hFc (Glu99-Ala330) 6xHis tag
Characteristics:	Extracellular Domain Protein
Purification:	affinity purification
Purity:	The purity of the protein is greater than 95 % as determined by SDS-PAGE and Coomassie blue staining.

#### Target Details

Target:	Catalase (CAT)
Alternative Name:	CS1 ( <a href="#">CAT Products</a> )
Molecular Weight:	predicted molecular mass of 70 kDa after removal of the signal peptide.

## Target Details

Gene ID:	57823
UniProt:	<a href="#">Q9NQ25</a>
Pathways:	<a href="#">Cellular Glucan Metabolic Process</a> , <a href="#">Cell RedoxHomeostasis</a> , <a href="#">Photoperiodism</a>

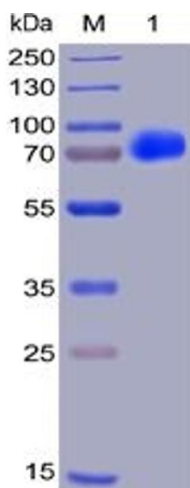
## Application Details

Application Notes:	Optimal working dilution should be determined by the investigator.
Restrictions:	For Research Use only

## Handling

Format:	Lyophilized
Reconstitution:	Reconstitute with deionized water
Buffer:	Lyophilized from sterile PBS, pH 7.4. Normally 5 % - 8 % trehalose is added as protectants before lyophilization.
Preservative:	Without preservative
Storage:	-20 °C,-80 °C
Storage Comment:	Store at -20°C to -80°C for 12 months in lyophilized form. After reconstitution, if not intended for use within a month, aliquot and store at -80°C (Avoid repeated freezing and thawing). Lyophilized proteins are shipped at ambient temperature.
Expiry Date:	12 months

## Images



### SDS-PAGE

**Image 1.** Human CS1, hFc-His Tag on SDS-PAGE under reducing condition.