

Datasheet for ABIN6961090
CTLA4 Protein (mFc-His Tag)

7 Images

[Go to Product page](#)

Overview

Quantity:	100 µg
Target:	CTLA4
Origin:	Human
Source:	HEK-293 Cells
Protein Type:	Recombinant
Purification tag / Conjugate:	This CTLA4 protein is labelled with mFc-His Tag.
Application:	ELISA, Flow Cytometry (FACS)

Product Details

Purpose:	Recombinant human CTLA-4 protein with C-terminal mouse Fc and 6xHis tag
Specificity:	CTLA-4 (Gln36-Ser161) mFc (Pro99-Lys330) 6xHis
Characteristics:	Extracellular Domain Protein
Purification:	affinity purification
Purity:	The purity of the protein is greater than 95 % as determined by SDS-PAGE and Coomassie blue staining.

Target Details

Target:	CTLA4
Alternative Name:	CTLA-4 (CTLA4 Products)
Background:	Synonyms: CTLA4, CD152

Target Details

Description: This gene is a member of the immunoglobulin superfamily and encodes a protein which transmits an inhibitory signal to T cells. The protein contains a V domain, a transmembrane domain, and a cytoplasmic tail. Alternate transcriptional splice variants, encoding different isoforms, have been characterized. The membrane-bound isoform functions as a homodimer interconnected by a disulfide bond, while the soluble isoform functions as a monomer. Mutations in this gene have been associated with insulin-dependent diabetes mellitus, Graves disease, Hashimoto thyroiditis, celiac disease, systemic lupus erythematosus, thyroid-associated orbitopathy, and other autoimmune diseases.

Molecular Weight: predicted molecular mass of 54 kDa after removal of the signal peptide.

Gene ID: 1493

UniProt: [P16410](#)

Pathways: [Cancer Immune Checkpoints](#)

Application Details

Application Notes: Optimal working dilution should be determined by the investigator.

Restrictions: For Research Use only

Handling

Format: Lyophilized

Reconstitution: Reconstitute with deionized water

Buffer: Lyophilized from sterile PBS, pH 7.4. Normally 5 % - 8 % trehalose is added as protectants before lyophilization.

Preservative: Without preservative

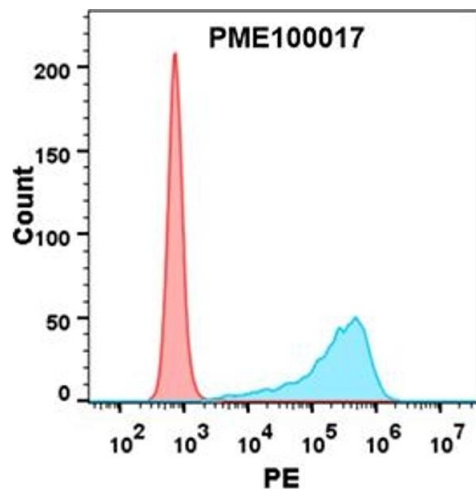
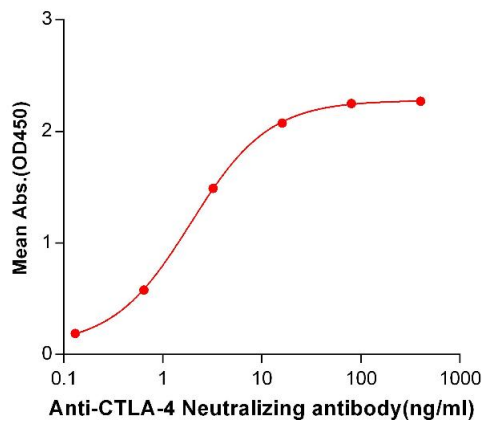
Storage: -20 °C, -80 °C

Storage Comment: Store at -20°C to -80°C for 12 months in lyophilized form. After reconstitution, if not intended for use within a month, aliquot and store at -80°C (Avoid repeated freezing and thawing).
Lyophilized proteins are shipped at ambient temperature.

Expiry Date: 12 months

Human CTLA-4, mFc-His Tagged protein ELISA

0.2 µg of CTLA-4, mFc-His Tagged protein per well



ELISA

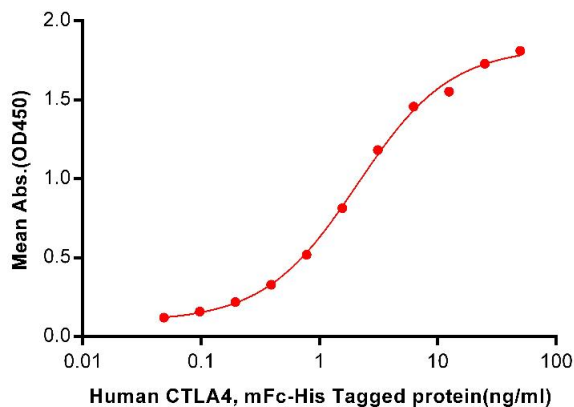
Image 1. ELISA plate pre-coated by 2 µg/mL (100 µL/well) Human CTLA-4, mFc-His tagged protein (ABIN6961090) can bind Anti-CTLA-4 Neutralizing antibody in a linear range of 0.13-16.0 ng/mL.

Flow Cytometry

Image 2. Flow cytometry analysis with 1 µg/mL Human CTLA4 Protein, mFc-His tag (ABIN6961090) on Expi293 cells transfected with human B7-1 (Blue histogram) or Expi293 transfected with irrelevant protein (Red histogram).

Human CTLA4, mFc-His Tagged protein ELISA

0.2 µg of Human B7-1, hFc Tagged protein per well



ELISA

Image 3. ELISA plate pre-coated by 2 µg/mL (100 µL/well) Human B7-1, hFc tagged protein (ABIN6961158) can bind Human CTLA4, mFc-His tagged protein (ABIN6961090) in a linear range of 0.048-2.094 ng/mL.

Please check the [product details page](#) for more images. Overall 7 images are available for ABIN6961090.