



[Go to Product page](#)

Datasheet for ABIN6961096
PD-L1 Protein (mFc-His Tag)

2 Images

Overview

Quantity:	100 µg
Target:	PD-L1
Origin:	Human
Source:	HEK-293 Cells
Protein Type:	Recombinant
Purification tag / Conjugate:	This PD-L1 protein is labelled with mFc-His Tag.
Application:	ELISA

Product Details

Purpose:	Recombinant human PD-L1 protein with C-terminal mouse Fc and 6xHis tag
Specificity:	PD-L1 (Phe19-Arg238) mFc (Pro99-Lys330) 6xHis tag
Characteristics:	Extracellular Domain Protein
Purification:	affinity purification
Purity:	The purity of the protein is greater than 95 % as determined by SDS-PAGE and Coomassie blue staining.

Target Details

Target:	PD-L1
Alternative Name:	PD-L1 (PD-L1 Products)
Background:	Synonyms: PD-L1, CD274, B7-H1, PDCD1L1, PDCD1LG1

Target Details

Description: This gene encodes an immune inhibitory receptor ligand that is expressed by hematopoietic and non-hematopoietic cells, such as T cells and B cells and various types of tumor cells. The encoded protein is a type I transmembrane protein that has immunoglobulin V-like and C-like domains. Interaction of this ligand with its receptor inhibits T-cell activation and cytokine production. During infection or inflammation of normal tissue, this interaction is important for preventing autoimmunity by maintaining homeostasis of the immune response. In tumor microenvironments, this interaction provides an immune escape for tumor cells through cytotoxic T-cell inactivation. Expression of this gene in tumor cells is considered to be prognostic in many types of human malignancies, including colon cancer and renal cell carcinoma. Alternative splicing results in multiple transcript variants.

Molecular Weight: predicted molecular mass of 52.3 kDa after removal of the signal peptide.

Gene ID: 29126

UniProt: [Q9NZQ7](#)

Pathways: [Cancer Immune Checkpoints](#)

Application Details

Application Notes: Optimal working dilution should be determined by the investigator.

Restrictions: For Research Use only

Handling

Format: Lyophilized

Reconstitution: Reconstitute with deionized water

Buffer: Lyophilized from sterile PBS, pH 7.4. Normally 5 % - 8 % trehalose is added as protectants before lyophilization.

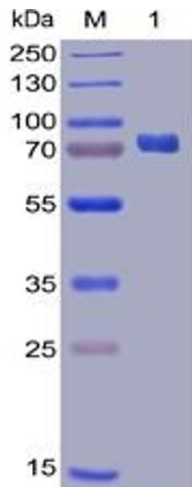
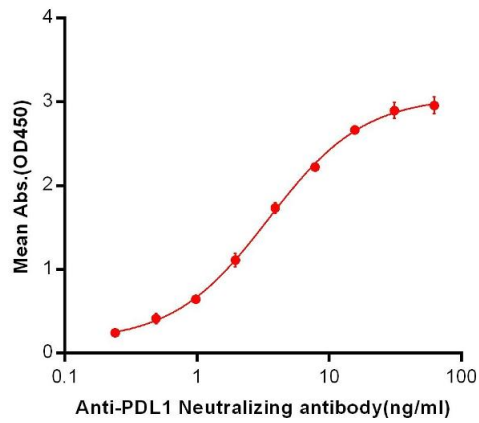
Preservative: Without preservative

Storage: -20 °C,-80 °C

Expiry Date: 12 months

Human PDL1, mFc-His Tagged protein ELISA

0.2 µg of Human PDL1, mFc-His Tagged protein per well



ELISA

Image 1. ELISA plate pre-coated by 2 µg/mL (100 µL/well) Human PD-L1, mFc-His tagged protein (ABIN6961096) can bind Anti-PDL1 Neutralizing antibody in a linear range of 0.24-7.81 ng/mL.

SDS-PAGE

Image 2. Human PD-L1 Protein, mFc-His Tag on SDS-PAGE under reducing condition.