

Datasheet for ABIN6961097
SLAMF1 Protein (mFc-His Tag)[Go to Product page](#)

1 Image

Overview

Quantity:	100 µg
Target:	SLAMF1
Origin:	Human
Source:	HEK-293 Cells
Protein Type:	Recombinant
Purification tag / Conjugate:	This SLAMF1 protein is labelled with mFc-His Tag.

Product Details

Purpose:	Recombinant human SLAMF1 protein with C-terminal mouse Fc and 6xHis tag
Specificity:	SLAMF1 (Ala21-Pro231) mFc (Pro99-Lys330) 6xHis tag
Characteristics:	Extracellular Domain Protein
Purification:	affinity purification
Purity:	The purity of the protein is greater than 95 % as determined by SDS-PAGE and Coomassie blue staining.

Target Details

Target:	SLAMF1
Alternative Name:	SLAMF1 (SLAMF1 Products)
Background:	Synonymes: SLAMF1, CD150, CDw150, SLAM, IPO-3 Description: SLAMF1 (Signaling Lymphocytic Activation Molecule Family Member 1) is a Protein Coding gene. Diseases associated with SLAMF1 include Measles and Subacute

Target Details

Sclerosing Panencephalitis. Among its related pathways are Dendritic Cells Developmental Lineage Pathway and T Cell Co-Signaling Pathway: Ligand-Receptor Interactions. Gene Ontology (GO) annotations related to this gene include antigen binding. An important paralog of this gene is LY9.

Molecular Weight: predicted molecular mass of 51.8 kDa after removal of the signal peptide.

Gene ID: 6504

UniProt: [Q13291](#)

Application Details

Application Notes: Optimal working dilution should be determined by the investigator.

Restrictions: For Research Use only

Handling

Format: Lyophilized

Reconstitution: Reconstitute with deionized water

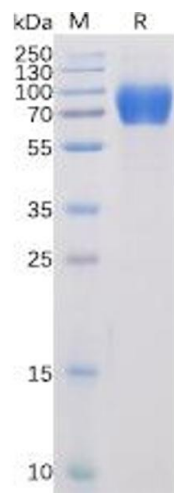
Buffer: Lyophilized from sterile PBS, pH 7.4. Normally 5 % - 8 % trehalose is added as protectants before lyophilization.

Preservative: Without preservative

Storage: -20 °C, -80 °C

Storage Comment: Store at -20°C to -80°C for 12 months in lyophilized form. After reconstitution, if not intended for use within a month, aliquot and store at -80°C (Avoid repeated freezing and thawing).
Lyophilized proteins are shipped at ambient temperature.

Expiry Date: 12 months



SDS-PAGE

Image 1. Human SLAMF1 Protein, mFc-His Tag on SDS-PAGE under reducing condition.