

Datasheet for ABIN6961098  
**PD-1 Protein (mFc-His Tag)**

## 3 Images

[Go to Product page](#)

## Overview

Quantity:	100 µg
Target:	PD-1 (PDCD1)
Origin:	Human
Source:	HEK-293 Cells
Protein Type:	Recombinant
Purification tag / Conjugate:	This PD-1 protein is labelled with mFc-His Tag.
Application:	ELISA

## Product Details

Purpose:	Recombinant human PD-1 protein with C-terminal mouse Fc and 6xHis tag
Specificity:	PD-1 (Phe24-Val170) mFc (Pro99-Lys330) 6xHis tag
Characteristics:	Extracellular Domain Protein
Purification:	affinity purification
Purity:	The purity of the protein is greater than 95 % as determined by SDS-PAGE and Coomassie blue staining.

## Target Details

Target:	PD-1 (PDCD1)
Alternative Name:	PD-1 ( <a href="#">PDCD1 Products</a> )
Background:	Synonyms: PDCD1, PD1, CD279, SLEB2

## Target Details

Description: This protein is expressed in pro-B-cells and is thought to play a role in their differentiation. In mice, expression of this gene is induced in the thymus when anti-CD3 antibodies are injected and large numbers of thymocytes undergo apoptosis. Mice deficient for this gene bred on a BALB/c background developed dilated cardiomyopathy and died from congestive heart failure. These studies suggest that this gene product may also be important in T cell function and contribute to the prevention of autoimmune diseases.

Molecular Weight: predicted molecular mass of 43.5 kDa after removal of the signal peptide.

Gene ID: 5133

UniProt: [Q15116](#)

Pathways: [Cancer Immune Checkpoints](#)

## Application Details

Application Notes: Optimal working dilution should be determined by the investigator.

Restrictions: For Research Use only

## Handling

Format: Lyophilized

Reconstitution: Reconstitute with deionized water

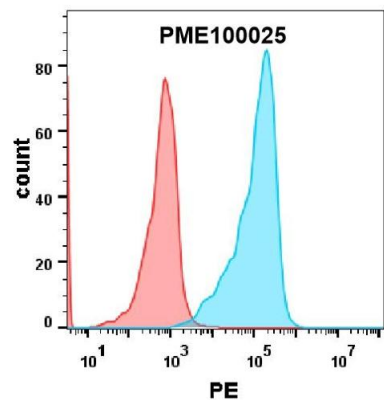
Buffer: Lyophilized from sterile PBS, pH 7.4. Normally 5 % - 8 % trehalose is added as protectants before lyophilization.

Preservative: Without preservative

Storage: -20 °C, -80 °C

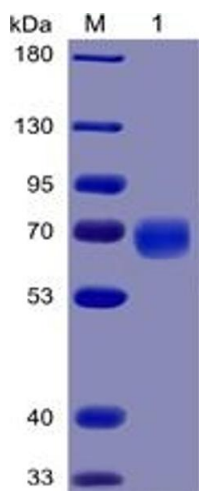
Storage Comment: Store at -20°C to -80°C for 12 months in lyophilized form. After reconstitution, if not intended for use within a month, aliquot and store at -80°C (Avoid repeated freezing and thawing).  
Lyophilized proteins are shipped at ambient temperature.

Expiry Date: 12 months



Flow Cytometry

**Image 1.** HEK293 cell line transfected with irrelevant protein (red histogram) and human PD-L2 protein (blue histogram) were surface stained with 2 µg/mL Human PD-1 Protein, mFc-His tag (ABIN6961098) followed by PE-conjugated Goat anti-mouse IgG secondary antibody.

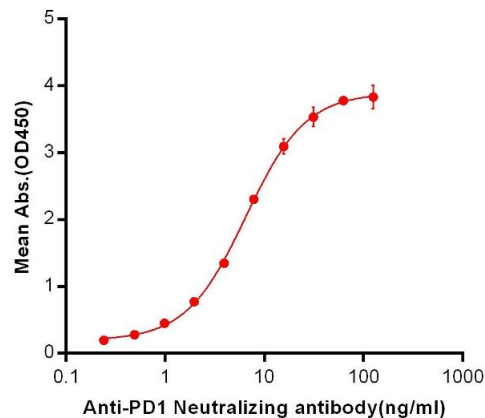


SDS-PAGE

**Image 2.** Human PD-1 Protein, mFc-His Tag on SDS-PAGE under reducing condition.

Human PD1, mFc-His Tagged protein ELISA

0.2 µg of Human PD1, mFc-His Tagged protein per well



ELISA

**Image 3.** ELISA plate pre-coated by 2 µg/mL (100 µL/well) Human PD1, mFc-His tagged protein (ABIN6961098) can bind Anti-PD-1 Neutralizing antibody in a linear range of 0.24-6.49 ng/mL.