

Datasheet for ABIN6961103
TIM3 Protein (mFc-His Tag)[Go to Product page](#)

2 Images

Overview

Quantity:	100 µg
Target:	TIM3 (TIM 3)
Origin:	Human
Source:	HEK-293 Cells
Protein Type:	Recombinant
Purification tag / Conjugate:	This TIM3 protein is labelled with mFc-His Tag.
Application:	ELISA

Product Details

Purpose:	Recombinant human TIM3 protein with C-terminal mouse Fc and 6xHis tag
Specificity:	TIM3 (Ser22-Gly202) mFc (Pro99-Lys330) 6xHis tag
Characteristics:	Extracellular Domain Protein
Purification:	affinity purification
Purity:	The purity of the protein is greater than 95 % as determined by SDS-PAGE and Coomassie blue staining.

Target Details

Target:	TIM3 (TIM 3)
Alternative Name:	TIM3 (TIM 3 Products)
Target Type:	Virus

Target Details

Background:	<p>Synonymes: HAVCR2, TIM3, TIMD3, FLJ14428, KIM3</p> <p>Description: The protein encoded by this gene belongs to the immunoglobulin superfamily, and TIM family of proteins. CD4-positive T helper lymphocytes can be divided into types 1 (Th1) and 2 (Th2) on the basis of their cytokine secretion patterns. Th1 cells are involved in cell-mediated immunity to intracellular pathogens and delayed-type hypersensitivity reactions, whereas, Th2 cells are involved in the control of extracellular helminthic infections and the promotion of atopic and allergic diseases. This protein is a Th1-specific cell surface protein that regulates macrophage activation, and inhibits Th1-mediated auto- and alloimmune responses, and promotes immunological tolerance.</p>
Molecular Weight:	predicted molecular mass of 47.5 kDa after removal of the signal peptide.
Gene ID:	84868
UniProt:	Q8TDQ0
Pathways:	Regulation of Lipid Metabolism by PPARalpha , Cancer Immune Checkpoints

Application Details

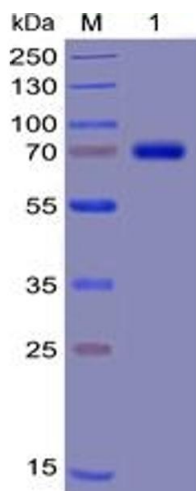
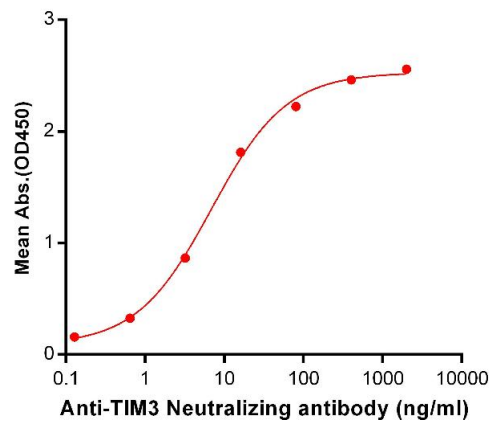
Application Notes:	Optimal working dilution should be determined by the investigator.
Restrictions:	For Research Use only

Handling

Format:	Lyophilized
Reconstitution:	Reconstitute with deionized water
Buffer:	Lyophilized from sterile PBS, pH 7.4. Normally 5 % - 8 % trehalose is added as protectants before lyophilization.
Preservative:	Without preservative
Storage:	-20 °C, -80 °C
Storage Comment:	<p>Store at -20°C to -80°C for 12 months in lyophilized form. After reconstitution, if not intended for use within a month, aliquot and store at -80°C (Avoid repeated freezing and thawing).</p> <p>Lyophilized proteins are shipped at ambient temperature.</p>
Expiry Date:	12 months

Human TIM3, mFc-His Tagged protein ELISA

0.2 µg of Human TIM3, mFc-His Tagged protein per well



ELISA

Image 1. ELISA plate pre-coated by 2 µg/mL (100 µL/well) Human TIM3, mFc-His tagged protein (ABIN6961103) can bind Anti-TIM3 Neutralizing antibody in a linear range of 0.64-80 ng/mL.

SDS-PAGE

Image 2. Human TIM3 Protein, mFc-His Tag on SDS-PAGE under reducing condition.