

Datasheet for ABIN6961104

Mesothelin Protein (MSLN) (AA 296-580) (mFc-His Tag)[Go to Product page](#)**2** Images

Overview

Quantity:	100 µg
Target:	Mesothelin (MSLN)
Protein Characteristics:	AA 296-580
Origin:	Human
Source:	HEK-293 Cells
Protein Type:	Recombinant
Purification tag / Conjugate:	This Mesothelin protein is labelled with mFc-His Tag.
Application:	Western Blotting (WB)

Product Details

Purpose:	Recombinant human Mesothelin(296-580) protein with C-terminal mouse Fc and 6xHis tag
Specificity:	Mesothelin (Glu296-Gly580) mFc (Pro99-Lys330) 6xHis tag
Characteristics:	Extracellular Domain Protein
Purification:	affinity purification
Purity:	The purity of the protein is greater than 95 % as determined by SDS-PAGE and Coomassie blue staining.

Target Details

Target:	Mesothelin (MSLN)
Alternative Name:	Mesothelin (MSLN Products)

Target Details

Molecular Weight:	predicted molecular mass of 59.3 kDa after removal of the signal peptide.
Gene ID:	10232
UniProt:	Q13421
Pathways:	EGFR Signaling Pathway , Positive Regulation of Peptide Hormone Secretion , Intracellular Steroid Hormone Receptor Signaling Pathway , Steroid Hormone Mediated Signaling Pathway , Carbohydrate Homeostasis , cAMP Metabolic Process , Regulation of G-Protein Coupled Receptor Protein Signaling , Positive Regulation of Endopeptidase Activity , Regulation of Carbohydrate Metabolic Process

Application Details

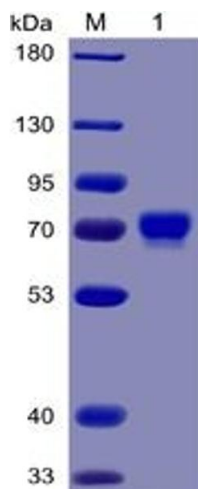
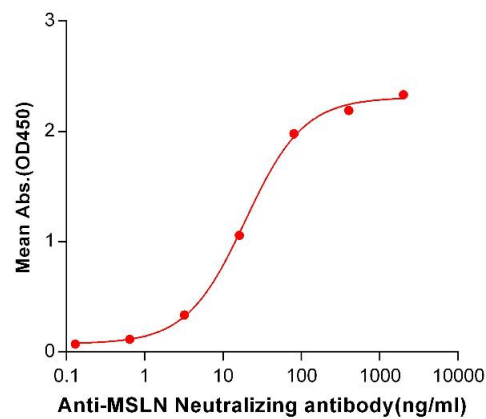
Application Notes:	Optimal working dilution should be determined by the investigator.
Restrictions:	For Research Use only

Handling

Format:	Lyophilized
Reconstitution:	Reconstitute with deionized water
Buffer:	Lyophilized from sterile PBS, pH 7.4. Normally 5 % - 8 % trehalose is added as protectants before lyophilization.
Preservative:	Without preservative
Storage:	-20 °C, -80 °C
Storage Comment:	Store at -20°C to -80°C for 12 months in lyophilized form. After reconstitution, if not intended for use within a month, aliquot and store at -80°C (Avoid repeated freezing and thawing). Lyophilized proteins are shipped at ambient temperature.
Expiry Date:	12 months

Human MSLN(296-580), mFc-His Tagged protein ELISA

0.2 µg of MSLN(296-580), mFc-His Tagged protein per well



ELISA

Image 1. ELISA plate pre-coated by 2 µg/mL (100 µL/well) Human Mesothelin, mFc-His tagged protein (ABIN6961104) can bind Anti-Mesothelin Neutralizing antibody in a linear range of 3.2-80.0 ng/mL.

SDS-PAGE

Image 2. Human Mesothelin(296-580) Protein, mFc-His Tag on SDS-PAGE under reducing condition.