

Datasheet for ABIN6961105

IL-6 Protein (AA 30-212) (mFc-His Tag)**5** Images[Go to Product page](#)

Overview

Quantity:	100 µg
Target:	IL-6 (IL6)
Protein Characteristics:	AA 30-212
Origin:	Human
Source:	HEK-293 Cells
Protein Type:	Recombinant
Purification tag / Conjugate:	This IL-6 protein is labelled with mFc-His Tag.
Application:	ELISA, Flow Cytometry (FACS)

Product Details

Purpose:	Recombinant human IL6 protein with C-terminal mouse Fc and 6xHis tag
Specificity:	IL6 (Val30-Met212) mFc (Pro99-Lys330) 6xHis tag
Characteristics:	Extracellular Domain Protein
Purification:	Purified from cell culture supernatant by affinity chromatography
Purity:	The purity of the protein is greater than 95 % as determined by SDS-PAGE and Coomassie blue staining.

Target Details

Target:	IL-6 (IL6)
Alternative Name:	IL6 (IL6 Products)

Target Details

Background: This gene encodes a cytokine that functions in inflammation and the maturation of B cells. In addition, the encoded protein has been shown to be an endogenous pyrogen capable of inducing fever in people with autoimmune diseases or infections. The protein is primarily produced at sites of acute and chronic inflammation, where it is secreted into the serum and induces a transcriptional inflammatory response through interleukin 6 receptor, alpha. The functioning of this gene is implicated in a wide variety of inflammation-associated disease states, including susceptibility to diabetes mellitus and systemic juvenile rheumatoid arthritis. Alternative splicing results in multiple transcript variants.

Molecular Weight: predicted molecular mass of 47.9 kDa after removal of the signal peptide.

Gene ID: 3569

UniProt: [P05231](#)

Pathways: [TLR Signaling](#), [Hormone Transport](#), [Negative Regulation of Hormone Secretion](#), [Myometrial Relaxation and Contraction](#), [Positive Regulation of Immune Effector Process](#), [Production of Molecular Mediator of Immune Response](#), [Regulation of Carbohydrate Metabolic Process](#), [Autophagy](#), [Cell RedoxHomeostasis](#), [Cancer Immune Checkpoints](#), [Inflammasome](#)

Application Details

Restrictions: For Research Use only

Handling

Format: Lyophilized

Buffer: Lyophilized from sterile PBS, pH 7.4. Normally 5 % - 8 % trehalose is added as protectants before lyophilization.

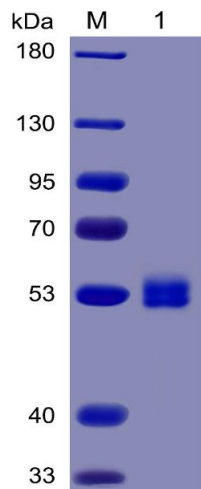
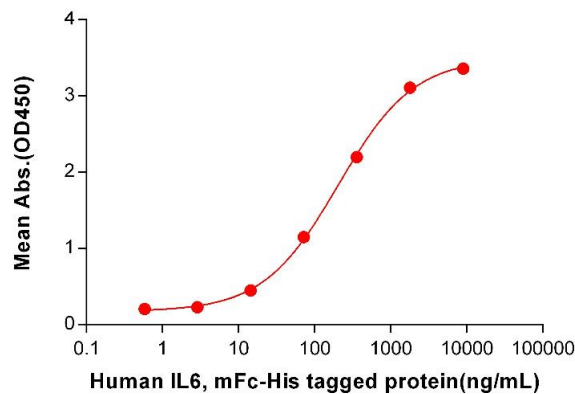
Storage: -20 °C,-80 °C

Storage Comment: Store at -20°C to -80°C for 12 months in lyophilized form. After reconstitution, if not intended for use within a month, aliquot and store at -80°C (Avoid repeated freezing and thawing).
Lyophilized proteins are shipped at ambient temperature.

Expiry Date: 12 months

Human IL6, mFc-His tagged protein ELISA

0.1 µg of Human IL6R, hFc tagged protein per well



ELISA

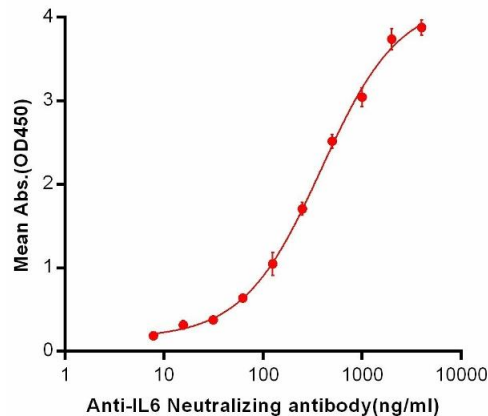
Image 1. ELISA plate pre-coated by 1 µg/mL (100 µL/well) Human IL6R, hFc tagged protein ABIN7092702, ABIN7272204 and ABIN7272205 can bind Human IL6, mFc-His tagged protein (ABIN6961105, ABIN7042239 and ABIN7042240) in a linear range of 14.4-360 ng/mL.

SDS-PAGE

Image 2. Human IL6 Protein, mFc-His Tag on SDS-PAGE under reducing condition.

Human IL6, mFc-His Tagged protein ELISA

0.2 µg of Human IL6, mFc-His Tagged protein per well



ELISA

Image 3. ELISA plate pre-coated by 2 µg/mL (100 µL/well) Human IL6, mFc-His tagged protein (ABIN6961105, ABIN7042239 and ABIN7042240) can bind Anti-IL6 Neutralizing antibody ABIN6964420 and ABIN7272556 in a linear range of 7.81-386.8 ng/mL.

Please check the [product details page](#) for more images. Overall 5 images are available for ABIN6961105.