

Datasheet for ABIN6961106

**FLT3LG Protein (mFc-His Tag)****2** Images[Go to Product page](#)

## Overview

Quantity:	100 µg
Target:	FLT3LG
Origin:	Human
Source:	HEK-293 Cells
Protein Type:	Recombinant
Purification tag / Conjugate:	This FLT3LG protein is labelled with mFc-His Tag.
Application:	ELISA

## Product Details

Purpose:	Recombinant human FLT3 Ligand protein with C-terminal mouse Fc and 6xHis tag
Specificity:	FLT3 Ligand (Thr27-Pro185) mFc (Pro99-Lys330) 6xHis tag
Characteristics:	Extracellular Domain Protein
Purification:	affinity purification
Purity:	The purity of the protein is greater than 95 % as determined by SDS-PAGE and Coomassie blue staining.

## Target Details

Target:	FLT3LG
Alternative Name:	FLT3 Ligand ( <a href="#">FLT3LG Products</a> )
Background:	Synonymes: FLT3LG, FL, FLT3L, Flt3 ligand

## Target Details

	Description: FMS-like tyrosine kinase 3 ligand (Flt-3 Ligand) is also known as FL, Flt3L and FLT3LG, is an $\alpha$ -helical cytokine that promotes the differentiation of multiple hematopoietic cell lineages. FLT3LG is expressed as a noncovalentlylinked dimer by T cells and bone marrow and thymic fibroblasts. Each 36 kDa
Molecular Weight:	predicted molecular mass of 45.6 kDa after removal of the signal peptide.
Gene ID:	14256
UniProt:	<a href="#">P49771</a>
Pathways:	<a href="#">RTK Signaling</a>

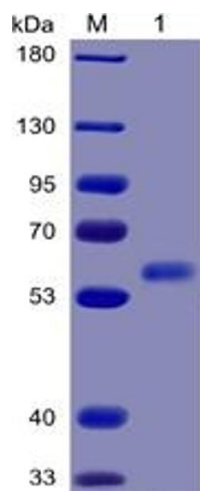
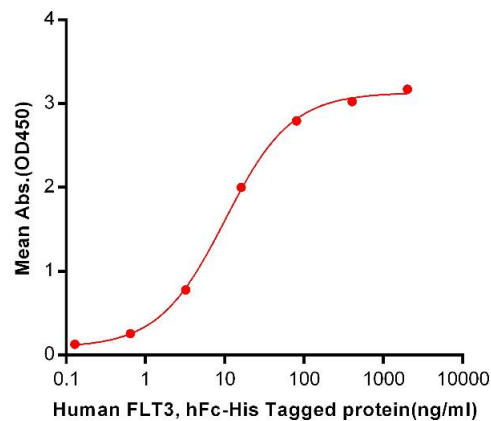
## Application Details

Application Notes:	Optimal working dilution should be determined by the investigator.
Restrictions:	For Research Use only

## Handling

Format:	Lyophilized
Reconstitution:	Reconstitute with deionized water
Buffer:	Lyophilized from sterile PBS, pH 7.4. Normally 5 % - 8 % trehalose is added as protectants before lyophilization.
Preservative:	Without preservative
Storage:	-20 °C,-80 °C
Storage Comment:	Store at -20°C to -80°C for 12 months in lyophilized form. After reconstitution, if not intended for use within a month, aliquot and store at -80°C (Avoid repeated freezing and thawing). Lyophilized proteins are shipped at ambient temperature.
Expiry Date:	12 months

**Human FLT3 Ligand, mFc-His Tagged protein ELISA**  
0.2 µg of Human FLT3 Ligand, mFc-His Tagged protein per well



**ELISA**

**Image 1.** ELISA plate pre-coated by 2 µg/mL (100 µL/well) Human FLT3LG, mFc-His tagged protein (ABIN6961106) can bind Human FLT3, hFc-His tagged protein (ABIN6961080) in a linear range of 0.128-10.02 ng/mL.

**SDS-PAGE**

**Image 2.** Human FLT3 Ligand Protein, mFc-His Tag on SDS-PAGE under reducing condition.