

Datasheet for ABIN6961115

EPH Receptor A3 Protein (EPHA3) (mFc-His Tag)[Go to Product page](#)**2** Images

Overview

Quantity:	100 µg
Target:	EPH Receptor A3 (EPHA3)
Origin:	Human
Source:	HEK-293 Cells
Protein Type:	Recombinant
Purification tag / Conjugate:	This EPH Receptor A3 protein is labelled with mFc-His Tag.
Application:	ELISA

Product Details

Purpose:	Recombinant human EPHA3 protein with C-terminal mouse Fc and 6xHis tag
Specificity:	EPHA3 (Glu21-Gln541) mFc (Pro99-Lys330) 6xHis tag
Characteristics:	Extracellular Domain Protein
Purification:	affinity purification
Purity:	The purity of the protein is greater than 95 % as determined by SDS-PAGE and Coomassie blue staining.

Target Details

Target:	EPH Receptor A3 (EPHA3)
Alternative Name:	EPHA3 (EPHA3 Products)
Background:	Synonymes: TYRO4, HEK4, ETK1, ETK, EK4, HEK

Target Details

Description: This gene belongs to the ephrin receptor subfamily of the protein-tyrosine kinase family. EPH and EPH-related receptors have been implicated in mediating developmental events, particularly in the nervous system. Receptors in the EPH subfamily typically have a single kinase domain and an extracellular region containing a Cys-rich domain and 2 fibronectin type III repeats. The ephrin receptors are divided into 2 groups based on the similarity of their extracellular domain sequences and their affinities for binding ephrin-A and ephrin-B ligands. This gene encodes a protein that binds ephrin-A ligands. Two alternatively spliced transcript variants have been described for this gene.

Molecular Weight: predicted molecular mass of 85.9 kDa after removal of the signal peptide.

Gene ID: 2042

UniProt: [P29320](#)

Pathways: [RTK Signaling](#), [Regulation of Cell Size](#)

Application Details

Application Notes: Optimal working dilution should be determined by the investigator.

Restrictions: For Research Use only

Handling

Format: Lyophilized

Reconstitution: Reconstitute with deionized water

Buffer: Lyophilized from sterile PBS, pH 7.4. Normally 5 % - 8 % trehalose is added as protectants before lyophilization.

Preservative: Without preservative

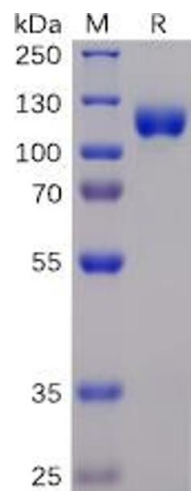
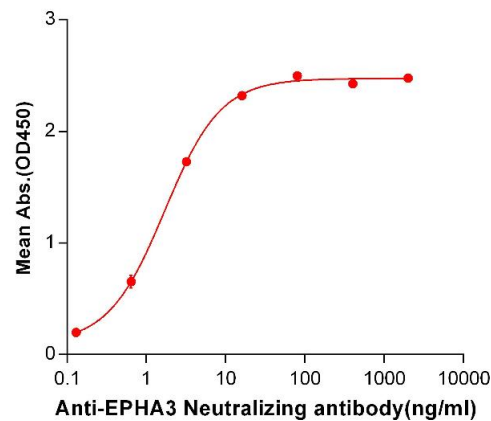
Storage: -20 °C, -80 °C

Storage Comment: Store at -20°C to -80°C for 12 months in lyophilized form. After reconstitution, if not intended for use within a month, aliquot and store at -80°C (Avoid repeated freezing and thawing).
Lyophilized proteins are shipped at ambient temperature.

Expiry Date: 12 months

Human EPHA3, mFc-His Tagged protein ELISA

0.2 µg of EPHA3, mFc-His Tagged protein per well



ELISA

Image 1. ELISA plate pre-coated by 2 µg/mL (100 µL/well) Human EPHA3, mFc-His tagged protein (ABIN6961115) can bind Anti-EPHA3 Neutralizing antibody in a linear range of 0.13-16.0 ng/mL.

SDS-PAGE

Image 2. Human EPHA3 Protein, mFc-His Tag on SDS-PAGE under reducing condition.