

Datasheet for ABIN6961116
BTLA Protein (mFc-His Tag)

3 Images

[Go to Product page](#)

Overview

Quantity:	100 µg
Target:	BTLA
Origin:	Human
Source:	HEK-293 Cells
Protein Type:	Recombinant
Purification tag / Conjugate:	This BTLA protein is labelled with mFc-His Tag.
Application:	ELISA

Product Details

Purpose:	Recombinant human BTLA protein with C-terminal mouse Fc and 6xHis tag
Specificity:	BTLA (Lys31-Ser150) mFc (Pro99-Lys330) 6xHis tag
Characteristics:	Extracellular Domain Protein
Purification:	affinity purification
Purity:	The purity of the protein is greater than 95 % as determined by SDS-PAGE and Coomassie blue staining.

Target Details

Target:	BTLA
Alternative Name:	BTLA (BTLA Products)
Background:	Synonyms: BTLA, CD272

Target Details

Description: This gene encodes a member of the immunoglobulin superfamily. The encoded protein contains a single immunoglobulin (Ig) domain and is a receptor that relays inhibitory signals to suppress the immune response. Alternative splicing results in multiple transcript variants. Polymorphisms in this gene have been associated with an increased risk of rheumatoid arthritis.

Molecular Weight: predicted molecular mass of 41.3 kDa after removal of the signal peptide.

Gene ID: 151888

UniProt: [Q7Z6A9](#)

Pathways: [Cancer Immune Checkpoints](#)

Application Details

Application Notes: Optimal working dilution should be determined by the investigator.

Restrictions: For Research Use only

Handling

Format: Lyophilized

Reconstitution: Reconstitute with deionized water

Buffer: Lyophilized from sterile PBS, pH 7.4. Normally 5 % - 8 % trehalose is added as protectants before lyophilization.

Preservative: Without preservative

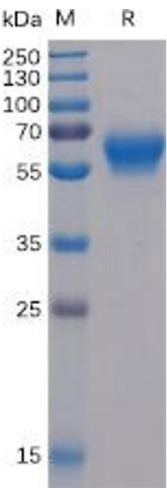
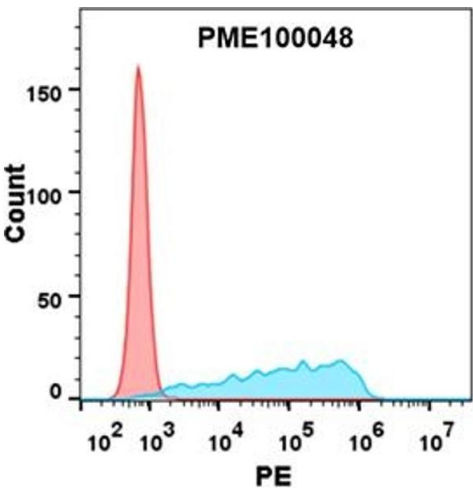
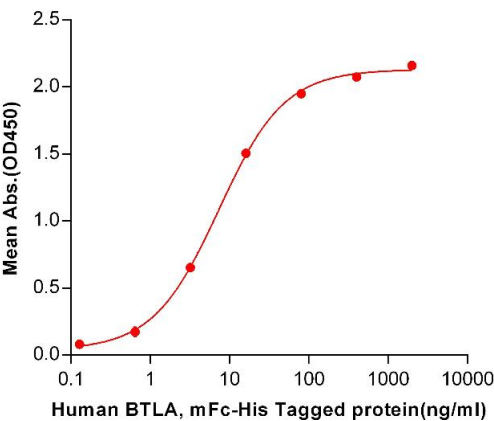
Storage: -20 °C, -80 °C

Storage Comment: Store at -20°C to -80°C for 12 months in lyophilized form. After reconstitution, if not intended for use within a month, aliquot and store at -80°C (Avoid repeated freezing and thawing).
Lyophilized proteins are shipped at ambient temperature.

Expiry Date: 12 months

Human BTLA, mFc-His Tagged protein ELISA

0.2 µg of HVEM, His Tagged protein per well



ELISA

Image 1. ELISA plate pre-coated by 2 µg/mL (100 µL/well) Human HVEM, His tagged protein (ABIN6964089) can bind Human BTLA,mFc-His tagged protein(ABIN6961116) in a linear range of 0.64-80 ng/mL.

Flow Cytometry

Image 2. Flow cytometry analysis with 1 µg/mL Human BTLA Protein, mFc-His tag (ABIN6961116) on Expi293 cells transfected with human HVEM (Blue histogram) or Expi293 transfected with irrelevant protein (Red histogram).

SDS-PAGE

Image 3. Human BTLA Protein, mFc-His Tag on SDS-PAGE under reducing condition.