

Datasheet for ABIN6961130

**ACE2 Protein (mFc Tag)****2** Images[Go to Product page](#)

## Overview

Quantity:	100 µg
Target:	ACE2
Origin:	Human
Source:	HEK-293 Cells
Protein Type:	Recombinant
Purification tag / Conjugate:	This ACE2 protein is labelled with mFc Tag.
Application:	ELISA

## Product Details

Purpose:	Recombinant human ACE2 protein with C-terminal mouse Fc tag
Specificity:	ACE2 (Gln18-Ser740) mFc (Pro99-Lys330)
Characteristics:	Extracellular Domain Protein
Purification:	affinity purification
Purity:	The purity of the protein is greater than 95 % as determined by SDS-PAGE and Coomassie blue staining.

## Target Details

Target:	ACE2
Alternative Name:	ACE2 ( <a href="#">ACE2 Products</a> )
Background:	Synonyms: ACE-2,ACEH,ACE2

## Target Details

Description: The protein encoded by this gene belongs to the angiotensin-converting enzyme family of dipeptidyl carboxydipeptidases and has considerable homology to human angiotensin 1 converting enzyme. This secreted protein catalyzes the cleavage of angiotensin I into angiotensin 1-9, and angiotensin II into the vasodilator angiotensin 1-7. The organ- and cell-specific expression of this gene suggests that it may play a role in the regulation of cardiovascular and renal function, as well as fertility. In addition, the encoded protein is a functional receptor for the spike glycoprotein of the human coronaviruses SARS and HCoV-NL63.

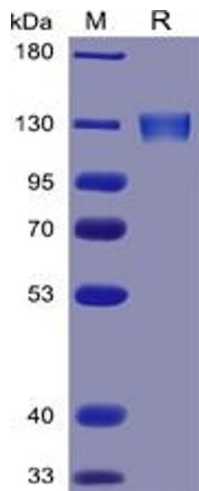
Molecular Weight:	predicted molecular mass of 109.7 kDa after removal of the signal peptide.
Gene ID:	59272
UniProt:	<a href="#">Q9BYF1</a>
Pathways:	<a href="#">ACE Inhibitor Pathway</a> , <a href="#">Peptide Hormone Metabolism</a> , <a href="#">Regulation of Systemic Arterial Blood Pressure by Hormones</a> , <a href="#">Feeding Behaviour</a>

## Application Details

Application Notes:	Optimal working dilution should be determined by the investigator.
Restrictions:	For Research Use only

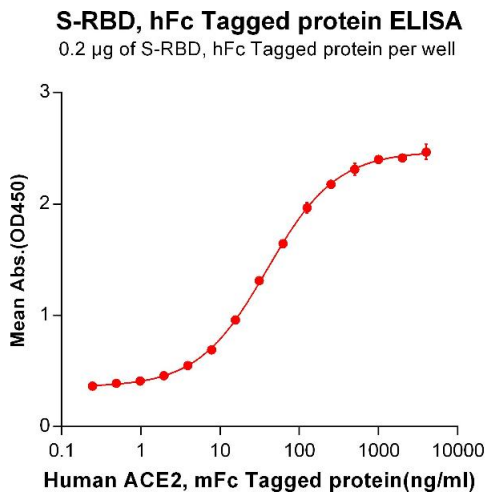
## Handling

Format:	Lyophilized
Reconstitution:	Reconstitute with deionized water
Buffer:	Lyophilized from sterile PBS, pH 7.4. Normally 5 % - 8 % trehalose is added as protectants before lyophilization.
Preservative:	Without preservative
Storage:	-20 °C, -80 °C
Storage Comment:	Store at -20°C to -80°C for 12 months in lyophilized form. After reconstitution, if not intended for use within a month, aliquot and store at -80°C (Avoid repeated freezing and thawing). Lyophilized proteins are shipped at ambient temperature.
Expiry Date:	12 months



SDS-PAGE

**Image 1.** Human ACE2 Protein, mFc Tag on SDS-PAGE under reducing condition.



ELISA

**Image 2.** ELISA plate pre-coated by 2 µg/mL (100 µL/well) S-RBD, hFc tagged protein (ABIN6961170) can bind Human ACE2, mFc Tagged protein(ABIN6961130) in a linear range of 0.976-39.35 ng/mL.