

Datasheet for ABIN6961145  
**SIGLEC15 Protein (mFc-His Tag)**[Go to Product page](#)

## 1 Image

## Overview

Quantity:	100 µg
Target:	SIGLEC15
Origin:	Human
Source:	HEK-293 Cells
Protein Type:	Recombinant
Purification tag / Conjugate:	This SIGLEC15 protein is labelled with mFc-His Tag.

## Product Details

Purpose:	Recombinant human SIGLEC15 protein with C-terminal mouse Fc and 6xHis tag
Specificity:	SIGLEC15 (Phe20-Thr263) mFc (Pro99-Lys330) 6xHis tag
Characteristics:	Extracellular Domain Protein
Purification:	affinity purification
Purity:	The purity of the protein is greater than 95 % as determined by SDS-PAGE and Coomassie blue staining.

## Target Details

Target:	SIGLEC15
Alternative Name:	SIGLEC15 ( <a href="#">SIGLEC15 Products</a> )
Background:	Synonymes: CD33 antigen-like 3,SIGLEC-15,CD33L3,sialic acid-binding Ig-like lectin 15,Siglec15,Siglec-15 Description: SIGLEC15 (Sialic Acid Binding Ig Like Lectin 15) is a Protein Coding gene. Diseases

## Target Details

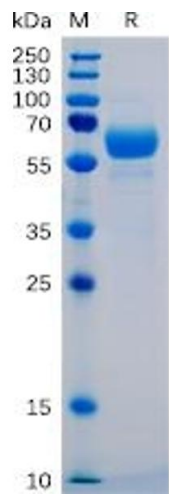
	associated with SIGLEC15 include Osteoporosis, Juvenile and Osteoporosis. Among its related pathways are Innate Immune System and RET signaling. An important paralog of this gene is SIGLEC1.
Molecular Weight:	predicted molecular mass of 53.6 kDa after removal of the signal peptide. The apparent molecular mass of SIGLEC15-mFc-His is 55-70 kDa due to glycosylation.
Gene ID:	284266
UniProt:	<a href="#">Q6ZMC9</a>

## Application Details

Application Notes:	Optimal working dilution should be determined by the investigator.
Restrictions:	For Research Use only

## Handling

Format:	Lyophilized
Reconstitution:	Reconstitute with deionized water
Buffer:	Lyophilized from sterile PBS, pH 7.4. Normally 5 % - 8 % trehalose is added as protectants before lyophilization.
Preservative:	Without preservative
Storage:	-20 °C, -80 °C
Storage Comment:	Store at -20°C to -80°C for 12 months in lyophilized form. After reconstitution, if not intended for use within a month, aliquot and store at -80°C (Avoid repeated freezing and thawing). Lyophilized proteins are shipped at ambient temperature.
Expiry Date:	12 months



SDS-PAGE

**Image 1.** Human SIGLEC15 Protein, mFc-His Tag on SDS-PAGE under reducing condition.