

Datasheet for ABIN6961153
CD200 Protein (CD200) (AA 31-232) (His tag)



[Go to Product page](#)

2 Images

Overview

Quantity:	100 µg
Target:	CD200
Protein Characteristics:	AA 31-232
Origin:	Human
Source:	HEK-293 Cells
Protein Type:	Recombinant
Purification tag / Conjugate:	This CD200 protein is labelled with His tag.

Product Details

Purpose:	Recombinant human CD200 protein with C-terminal 6xHis tag
Specificity:	CD200 (Gln31-Gly232) 6xHis tag
Characteristics:	Extracellular Domain Protein
Purification:	Purified from cell culture supernatant by affinity chromatography
Purity:	The purity of the protein is greater than 95 % as determined by SDS-PAGE and Coomassie blue staining.

Target Details

Target:	CD200
Alternative Name:	CD200 (CD200 Products)
Background:	This gene encodes a type I membrane glycoprotein containing two extracellular

Target Details

immunoglobulin domains, a transmembrane and a cytoplasmic domain. This gene is expressed by various cell types, including B cells, a subset of T cells, thymocytes, endothelial cells, and neurons. The encoded protein plays an important role in immunosuppression and regulation of anti-tumor activity. Alternative splicing results in multiple transcript variants encoding different isoforms.

Molecular Weight: predicted molecular mass of 23.3 kDa after removal of the signal peptide.

Gene ID: 4345

UniProt: [P41217](#)

Application Details

Restrictions: For Research Use only

Handling

Format: Lyophilized

Buffer: Lyophilized from sterile PBS, pH 7.4. Normally 5 % - 8 % trehalose is added as protectants before lyophilization.

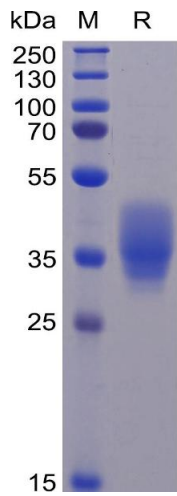
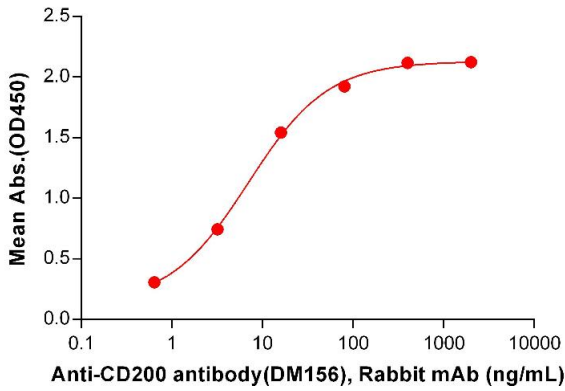
Storage: -20 °C, -80 °C

Storage Comment: Store at -20°C to -80°C for 12 months in lyophilized form. After reconstitution, if not intended for use within a month, aliquot and store at -80°C (Avoid repeated freezing and thawing).
Lyophilized proteins are shipped at ambient temperature.

Expiry Date: 12 months

Human CD200, His Tagged protein ELISA

0.2 µg of Human CD200, His tagged protein per well



ELISA

Image 1. ELISA plate pre-coated by 2 µg/mL (100 µL/well) Human CD200 Protein, His Tag (ABIN6961153, ABIN7042335 and ABIN7042336) can bind Anti-CD200 antibody(DM156), Rabbit mAb in a linear range of 0.64-3.20 ng/mL.

SDS-PAGE

Image 2. Human CD200 Protein, His Tag on SDS-PAGE under reducing condition.