

Datasheet for ABIN6961157

SELPLG Protein (AA 18-320) (His tag)[Go to Product page](#)**2** Images

Overview

Quantity:	100 µg
Target:	SELPLG
Protein Characteristics:	AA 18-320
Origin:	Human
Source:	HEK-293 Cells
Protein Type:	Recombinant
Purification tag / Conjugate:	This SELPLG protein is labelled with His tag.

Product Details

Purpose:	Recombinant Human CD162 protein with C-terminal 6xHis tag
Specificity:	CD162 (Leu18-Cys320) 6xHis tag
Characteristics:	Extracellular Domain Protein
Purification:	Purified from cell culture supernatant by affinity chromatography
Purity:	The purity of the protein is greater than 95 % as determined by SDS-PAGE and Coomassie blue staining.

Target Details

Target:	SELPLG
Alternative Name:	CD162 (SELPLG Products)
Background:	This gene encodes a glycoprotein that functions as a high affinity counter-receptor for the cell

Target Details

adhesion molecules P-, E- and L- selectin expressed on myeloid cells and stimulated T lymphocytes. As such, this protein plays a critical role in leukocyte trafficking during inflammation by tethering of leukocytes to activated platelets or endothelia expressing selectins. This protein requires two post-translational modifications, tyrosine sulfation and the addition of the sialyl Lewis x tetrasaccharide (sLex) to its O-linked glycans, for its high-affinity binding activity. Aberrant expression of this gene and polymorphisms in this gene are associated with defects in the innate and adaptive immune response. Alternate splicing results in multiple transcript variants.

Molecular Weight: predicted molecular mass of 31.4 kDa after removal of the signal peptide. The apparent molecular mass of CD162-His is 70-100 kDa due to glycosylation.

Gene ID: 6404

UniProt: [Q14242](#)

Application Details

Restrictions: For Research Use only

Handling

Format: Lyophilized

Buffer: Lyophilized from sterile PBS, pH 7.4. Normally 5 % - 8 % trehalose is added as protectants before lyophilization.

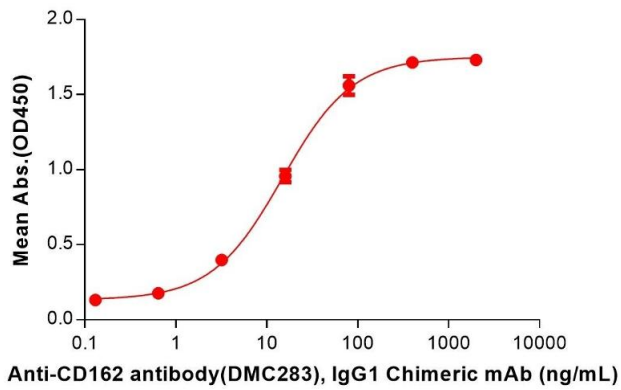
Storage: -20 °C, -80 °C

Storage Comment: Store at -20°C to -80°C for 12 months in lyophilized form. After reconstitution, if not intended for use within a month, aliquot and store at -80°C (Avoid repeated freezing and thawing). Lyophilized proteins are shipped at ambient temperature.

Expiry Date: 12 months

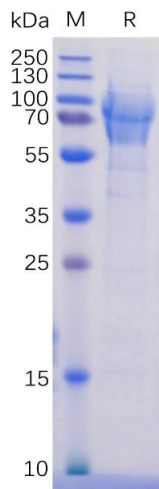
Human CD162, His Tagged protein ELISA

0.2 µg of Human CD162, His tagged protein per well



ELISA

Image 1. ELISA plate pre-coated by 2 µg/mL (100 µL/well) Human CD162 Protein, His Tag (ABIN6961157, ABIN7042343 and ABIN7042344) can bind Anti-CD162 antibody, IgG1 Chimeric mAb (ABIN7455314, ABIN7490585 and ABIN7490586) in a linear range of 3.20-80 ng/mL.



SDS-PAGE

Image 2. Human CD162 Protein, His Tag on SDS-PAGE under reducing condition.