

Datasheet for ABIN6963877

anti-Perforin 1 antibody (PromoFluor 647 Premium)



[Go to Product page](#)

1 Image

Overview

Quantity:	100 tests
Target:	Perforin 1 (PRF1)
Reactivity:	Human, Pig, Non-Human Primate
Host:	Mouse
Clonality:	Monoclonal
Conjugate:	This Perforin 1 antibody is conjugated to PromoFluor 647 Premium
Application:	Flow Cytometry (FACS)

Product Details

Immunogen:	Native human Perforin
Clone:	Pf-344
Isotype:	IgG1
Specificity:	Native Perforin.
Cross-Reactivity (Details):	The antibody also cross-reacts with Perforin from pig.
Purification:	Purified from in vitro cultures by protein G affinity chromatography.

Target Details

Target:	Perforin 1 (PRF1)
Alternative Name:	Perforin (PRF1 Products)
Gene ID:	5551

Target Details

Pathways: [Apoptosis, Caspase Cascade in Apoptosis](#)

Application Details

Application Notes: Detection of Perforin producing cells by flow cytometry. 5 µL is recommended for staining of 1 million cells in a total volume of 50 µL. Detection of Perforin by flow cytometry in viable human peripheral blood mononuclear cells (PBMC). Human PBMC were fixed and permeabilized using 4 % paraformaldehyde and saponin, and subsequently stained with Pf-344-PF647P (solid line). Matched isotype control antibody (dashed line). The histogram derives from gated events of typical lymphocyte characteristics in forward and side light scatter. Flow cytometry was performed on a BD FACSVerse system.

Restrictions: For Research Use only

Handling

Format: Liquid

Buffer: in PBS with 0.2 % BSA and 0.09 % sodium azide

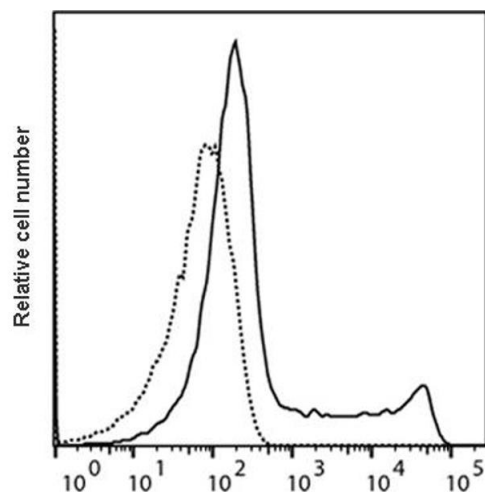
Preservative: Sodium azide

Precaution of Use: This product contains Sodium azide: a POISONOUS AND HAZARDOUS SUBSTANCE which should be handled by trained staff only.

Storage: 4 °C,-20 °C

Storage Comment: Store product at 4-8°C or frozen at -20°C or below. Avoid repeated freezing/thawing.

Expiry Date: 18 months



Flow Cytometry

Image 1. Detection of Perforin by flow cytometry in viable human peripheral blood mononuclear cells (PBMC). Fixed and permeabilized cells were stained with anti-human Perforin mAb Pf-344-PF647P (solid line). Matched isotype control antibody (dashed line). Flow cytometry was performed on a BD FACSVerse system.