

Datasheet for ABIN6964045

Recombinant anti-Syndecan 1 antibody (AA 23-254)[Go to Product page](#)

4 Images

Overview

Quantity:	100 µg
Target:	Syndecan 1 (SDC1)
Binding Specificity:	AA 23-254
Reactivity:	Human
Host:	Rabbit
Antibody Type:	Recombinant Antibody
Clonality:	Monoclonal
Conjugate:	This Syndecan 1 antibody is un-conjugated
Application:	ELISA, Flow Cytometry (FACS)

Product Details

Immunogen:	Recombinant human CD138(Gln23-Gly254) (ABIN6961079) produced by using human HEK293 cells
Clone:	DM45
Isotype:	IgG
Purification:	Purified from cell culture supernatant by affinity chromatography

Target Details

Target:	Syndecan 1 (SDC1)
Alternative Name:	CD138 (SDC1 Products)

Target Details

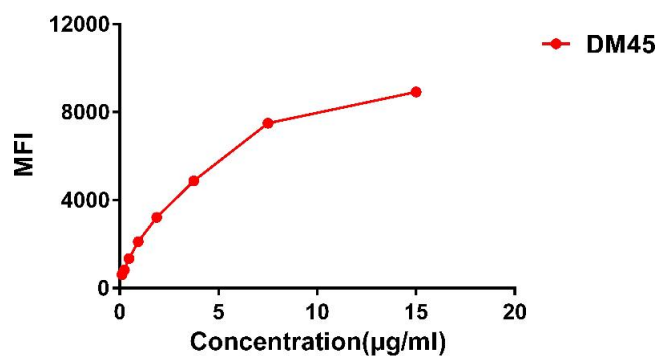
Background:	SDC1, Syndecan-1, CD138, SYND1, SDC
Molecular Weight:	32 kDa
Gene ID:	6382
UniProt:	P18827
Pathways:	Glycosaminoglycan Metabolic Process , Regulation of Muscle Cell Differentiation , Skeletal Muscle Fiber Development , Lipid Metabolism

Application Details

Application Notes:	ELISA 1/5000-10000, Flow Cyt 1/100
Restrictions:	For Research Use only

Handling

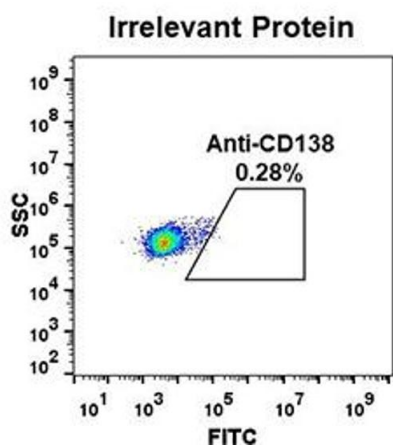
Format:	Lyophilized
Buffer:	50 % Glycerol, PBS, pH 7.4, 0.1 % BSA, 0.1 % Procline 300
Preservative:	ProClin
Precaution of Use:	This product contains ProClin: a POISONOUS AND HAZARDOUS SUBSTANCE which should be handled by trained staff only.
Storage:	-20 °C, -80 °C
Storage Comment:	Store at -20°C to -80°C for 12 months in lyophilized form. After reconstitution, if not intended for use within a month, aliquot and store at -80°C (Avoid repeated freezing and thawing). Lyophilized proteins are shipped at ambient temperature.
Expiry Date:	12 months



Titration

Image 1. Affinity ranking of different Rabbit anti-CD138 mAb clones by titration of different concentration onto H929 cells. The Y-axis represents the mean fluorescence intensity (MFI) while the X-axis represents the concentration of IgG used.

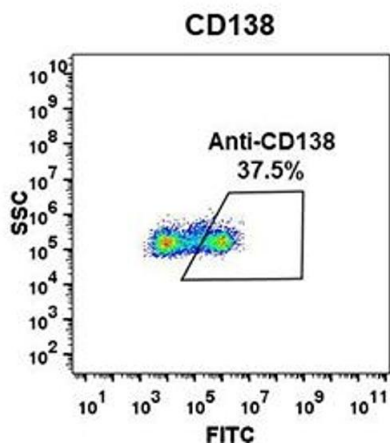
A



Flow Cytometry

Image 2. Expi 293 cell line transfected with irrelevant protein were surface stained with Rabbit anti-CD138 monoclonal antibody 1 µg/mL (clone: DM45) followed by Alexa 488-conjugated anti-rabbit IgG secondary antibody.

B



Flow Cytometry

Image 3. Expi 293 cell line transfected with human CD138 were surface stained with Rabbit anti-CD138 monoclonal antibody 1 µg/mL (clone: DM45) followed by Alexa 488-conjugated anti-rabbit IgG secondary antibody.

Please check the [product details page](#) for more images. Overall 4 images are available for ABIN6964045.