

Datasheet for ABIN6964047

**Recombinant anti-ACE2 antibody (AA 18-740)**[Go to Product page](#)

## 4 Images

## Overview

Quantity:	100 µg
Target:	ACE2
Binding Specificity:	AA 18-740
Reactivity:	Human
Host:	Rabbit
Antibody Type:	Recombinant Antibody
Clonality:	Monoclonal
Application:	ELISA, Flow Cytometry (FACS)

## Product Details

Immunogen:	Recombinant human ACE2(Gln18-Ser740) (ABIN6961130) produced by using human HEK293 cells
Clone:	DM47
Isotype:	IgG
Purification:	Purified from cell culture supernatant by affinity chromatography

## Target Details

Target:	ACE2
Alternative Name:	ACE2 ( <a href="#">ACE2 Products</a> )
Background:	ACE-2, ACEH, ACE2

## Target Details

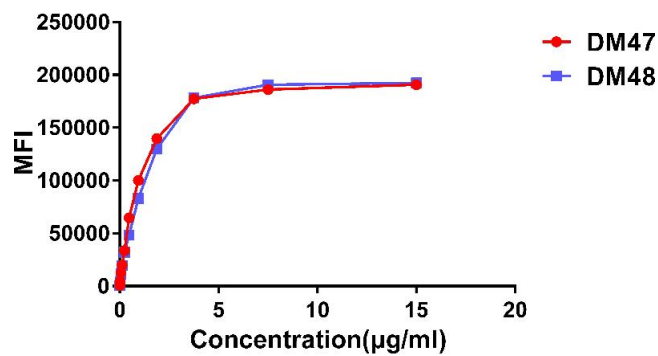
Molecular Weight:	92.4 kDa
Gene ID:	59272
UniProt:	<a href="#">Q9BYF1</a>
Pathways:	<a href="#">ACE Inhibitor Pathway</a> , <a href="#">Peptide Hormone Metabolism</a> , <a href="#">Regulation of Systemic Arterial Blood Pressure by Hormones</a> , <a href="#">Feeding Behaviour</a>

## Application Details

Application Notes:	ELISA 1/5000-10000,Flow Cyt 1/100
Restrictions:	For Research Use only

## Handling

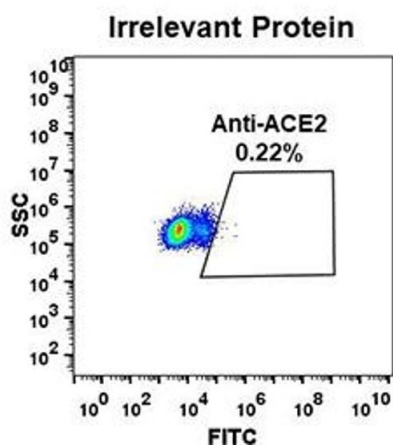
Format:	Lyophilized
Buffer:	50 % Glycerol, PBS, pH 7.4, 0.1 % BSA, 0.1 % Procline 300
Preservative:	ProClin
Precaution of Use:	This product contains ProClin: a POISONOUS AND HAZARDOUS SUBSTANCE which should be handled by trained staff only.
Storage:	-20 °C,-80 °C
Storage Comment:	Store at -20°C to -80°C for 12 months in lyophilized form. After reconstitution, if not intended for use within a month, aliquot and store at -80°C (Avoid repeated freezing and thawing). Lyophilized proteins are shipped at ambient temperature.
Expiry Date:	12 months



### Affinity Measurement

**Image 1.** Affinity ranking of different Rabbit anti-ACE2 mAb clones by titration of different concentration onto Expi 293 cell line transfected with human ACE2. The Y-axis represents the mean fluorescence intensity (MFI) while the X-axis represents the concentration of IgG used.

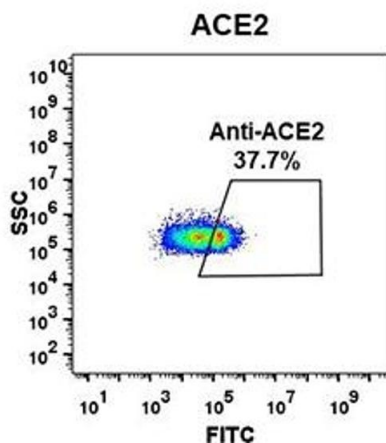
**A**



### Flow Cytometry

**Image 2.** Expi 293 cell line transfected with irrelevant protein were surface stained with Rabbit anti-ACE2 monoclonal antibody 1 µg/mL (clone: DM47) followed by Alexa 488-conjugated anti-rabbit IgG secondary antibody.

**B**



### Flow Cytometry

**Image 3.** Expi 293 cell line transfected with human ACE2 were surface stained with Rabbit anti-ACE2 monoclonal antibody 1 µg/mL (clone: DM47) followed by Alexa 488-conjugated anti-rabbit IgG secondary antibody.

Please check the [product details page](#) for more images. Overall 4 images are available for ABIN6964047.