



[Go to Product page](#)

Datasheet for ABIN6964052

## Recombinant anti-TNFRSF18 antibody (AA 50-177)

### 2 Images

#### Overview

Quantity:	100 µg
Target:	TNFRSF18
Binding Specificity:	AA 50-177
Reactivity:	Human
Host:	Rabbit
Antibody Type:	Recombinant Antibody
Clonality:	Monoclonal
Conjugate:	This TNFRSF18 antibody is un-conjugated
Application:	Flow Cytometry (FACS), ELISA

#### Product Details

Immunogen:	Recombinant human GITR Ligand (Gln50-Ser177) (ABIN6961093) produced by using human HEK293 cells
Clone:	DM52
Isotype:	IgG
Purification:	Purified from cell culture supernatant by affinity chromatography

#### Target Details

Target:	TNFRSF18
Alternative Name:	GITR-L ( <a href="#">TNFRSF18 Products</a> )

## Target Details

---

Background: TNFSF18, AITRL, TL6, hGITRL, GITR Ligand

Molecular Weight: 22.7 kDa

Gene ID: 8995

UniProt: [Q9UNG2](#)

Pathways: [Cancer Immune Checkpoints](#)

## Application Details

---

Application Notes: ELISA 1/5000-10000, Flow Cyt 1/101

Restrictions: For Research Use only

## Handling

---

Format: Lyophilized

Buffer: 50 % Glycerol, PBS, pH 7.4, 0.1 % BSA, 0.1 % Procline 300

Preservative: ProClin

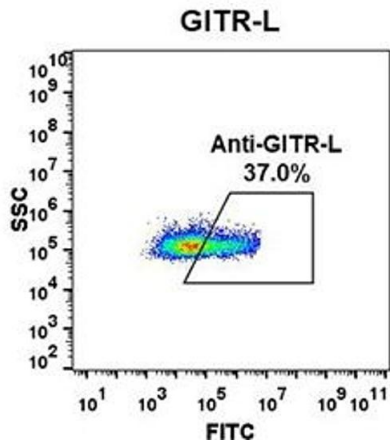
Precaution of Use: This product contains ProClin: a POISONOUS AND HAZARDOUS SUBSTANCE which should be handled by trained staff only.

Storage: -20 °C, -80 °C

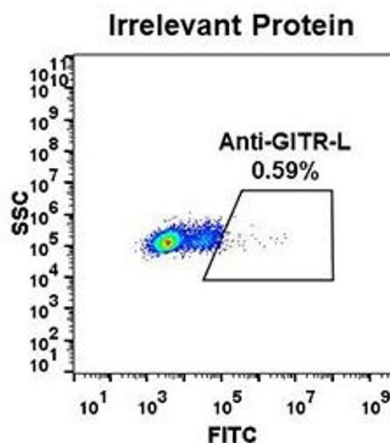
Storage Comment: Store at -20°C to -80°C for 12 months in lyophilized form. After reconstitution, if not intended for use within a month, aliquot and store at -80°C (Avoid repeated freezing and thawing).  
Lyophilized proteins are shipped at ambient temperature.

Expiry Date: 12 months

**B**



**A**



### Flow Cytometry

**Image 1.** Flow cytometry data of serially titrated Rabbit anti-GITR-L monoclonal antibody (clone: DM53) on H929 cells. The Y-axis represents the mean fluorescence intensity (MFI) while the X-axis represents the concentration of IgG used.

### Flow Cytometry

**Image 2.** Expi 293 cell line transfected with irrelevant protein (A) and human GITR-L (B) were surface stained with Rabbit anti-GITR-L monoclonal antibody 15 µg/mL (clone: DM53) followed by Alexa 488-conjugated anti-rabbit IgG secondary antibody.