

Datasheet for ABIN6964058

Recombinant anti-GPRC5D antibody (AA 1-27)**5** Images[Go to Product page](#)

Overview

Quantity:	100 µg
Target:	GPRC5D
Binding Specificity:	AA 1-27
Reactivity:	Human
Host:	Rabbit
Antibody Type:	Recombinant Antibody
Clonality:	Monoclonal
Conjugate:	This GPRC5D antibody is un-conjugated
Application:	ELISA, Flow Cytometry (FACS)

Product Details

Immunogen:	Recombinant human GPRC5D(Met1-Glu27) (ABIN6961124) produced by using human HEK293 cells
Clone:	DM63
Isotype:	IgG
Purification:	Purified from cell culture supernatant by affinity chromatography

Target Details

Target:	GPRC5D
Alternative Name:	GPRC5D (GPRC5D Products)

Target Details

Background: GPRC5D

Molecular Weight: 38.8kDa

Gene ID: 55507

UniProt: [Q9NZD1](#)

Application Details

Application Notes: ELISA 1/5000-10000,Flow Cyt 1/100

Restrictions: For Research Use only

Handling

Format: Lyophilized

Buffer: 50 % Glycerol, PBS, pH 7.4, 0.1 % BSA, 0.1 % Procline 300

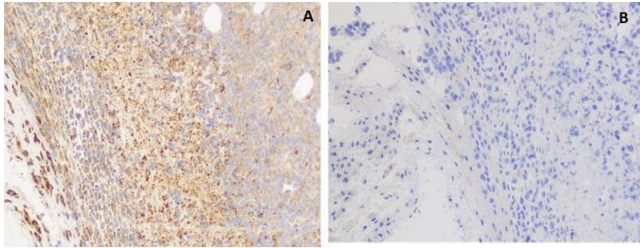
Preservative: ProClin

Precaution of Use: This product contains ProClin: a POISONOUS AND HAZARDOUS SUBSTANCE which should be handled by trained staff only.

Storage: -20 °C,-80 °C

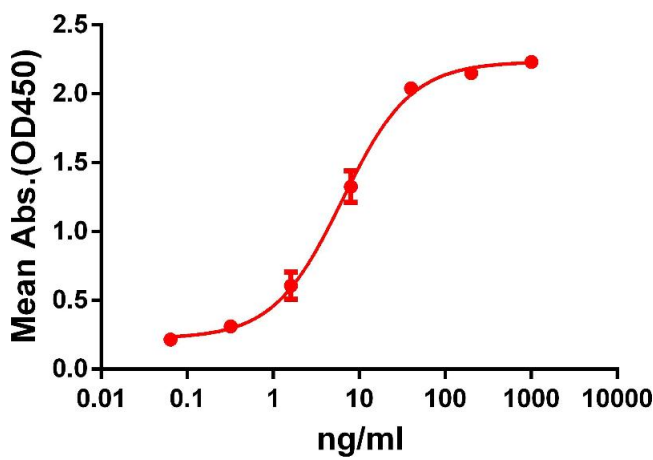
Storage Comment: Store at -20°C to -80°C for 12 months in lyophilized form. After reconstitution, if not intended for use within a month, aliquot and store at -80°C (Avoid repeated freezing and thawing).
Lyophilized proteins are shipped at ambient temperature.

Expiry Date: 12 months



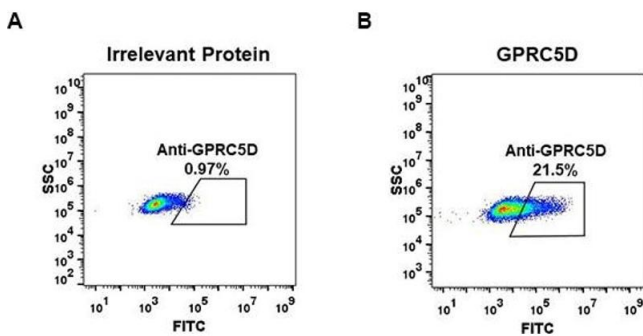
Immunohistochemistry

Image 1. IHC staining of H929 cells A. with rabbit anti-GD mAb (ABIN6964058, ABIN7272692 and ABIN7289681) at 5.9 µg/mL. B. with another anti-GD mAb (ABIN7092891, ABIN7272748 and ABIN7289737) at 8.8 µg/mL. ABIN6964058, ABIN7272692 and ABIN7289681 can specifically react with GD in IHC application.



ELISA

Image 2. ELISA plate pre-coated by 2 µg/mL (100 µL/well) Human GD protein, hFc-His tagged protein (ABIN6961124, ABIN7042277 and ABIN7042278) can bind Rabbit anti-GD monoclonal antibody (clone: DM61) in a linear range of 1-100 ng/mL.



Flow Cytometry

Image 3. Expi 293 cell line transfected with irrelevant protein (A) and human GD (B) were surface stained with Rabbit anti-GD monoclonal antibody 15 µg/mL (clone: DM61) followed by Alexa 488-conjugated anti-rabbit IgG secondary antibody.

Please check the [product details page](#) for more images. Overall 5 images are available for ABIN6964058.