

Datasheet for ABIN6964060

Recombinant anti-CD28 antibody (AA 19-152)

5 Images

[Go to Product page](#)

Overview

Quantity:	100 µg
Target:	CD28
Binding Specificity:	AA 19-152
Reactivity:	Human
Host:	Rabbit
Antibody Type:	Recombinant Antibody
Clonality:	Monoclonal
Conjugate:	This CD28 antibody is un-conjugated
Application:	Flow Cytometry (FACS), ELISA

Product Details

Immunogen:	Recombinant human CD28 (Asn19-Pro152) (ABIN6961087) produced by using human HEK293 cells
Clone:	DM61
Isotype:	IgG
Purification:	Purified from cell culture supernatant by affinity chromatography

Target Details

Target:	CD28
Alternative Name:	CD28 (CD28 Products)

Target Details

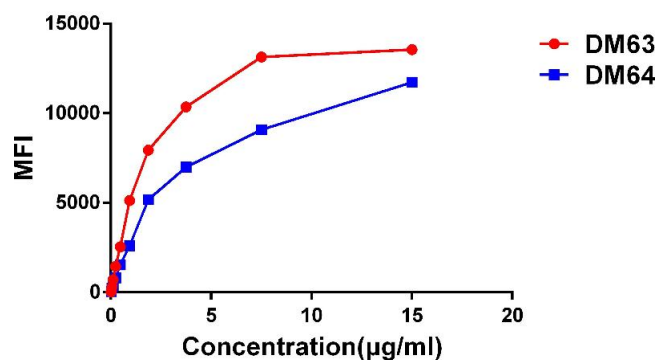
Background:	CD28, Tp44
Molecular Weight:	25kDa
Gene ID:	940
UniProt:	P10747
Pathways:	TCR Signaling , Fc-epsilon Receptor Signaling Pathway , EGFR Signaling Pathway , Regulation of Leukocyte Mediated Immunity , Positive Regulation of Immune Effector Process , Production of Molecular Mediator of Immune Response

Application Details

Application Notes:	ELISA 1/5000-10000,Flow Cyt 1/100
Restrictions:	For Research Use only

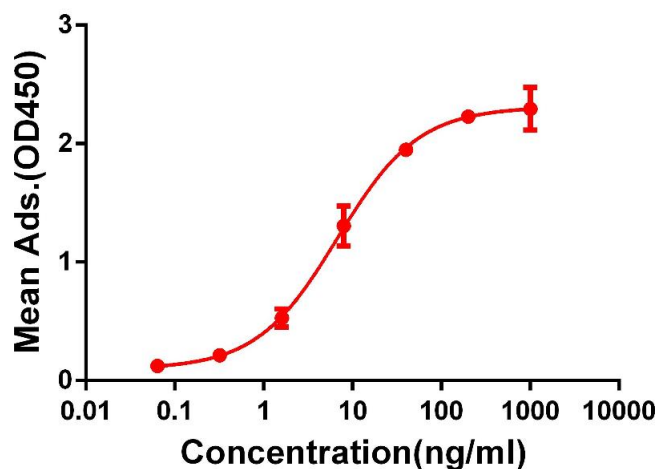
Handling

Format:	Lyophilized
Buffer:	50 % Glycerol, PBS, pH 7.4, 0.1 % BSA, 0.1 % Procline 300
Preservative:	ProClin
Precaution of Use:	This product contains ProClin: a POISONOUS AND HAZARDOUS SUBSTANCE which should be handled by trained staff only.
Storage:	-20 °C,-80 °C
Storage Comment:	Store at -20°C to -80°C for 12 months in lyophilized form. After reconstitution, if not intended for use within a month, aliquot and store at -80°C (Avoid repeated freezing and thawing). Lyophilized proteins are shipped at ambient temperature.
Expiry Date:	12 months



Affinity Measurement

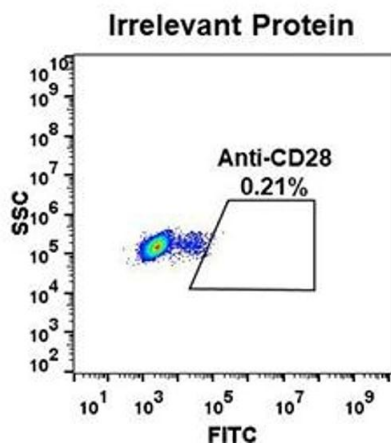
Image 1. Affinity ranking of different Rabbit anti- CD28 mAb clones by titration of different concentration onto Jurkat cells. The Y-axis represents the mean fluorescence intensity (MFI) while the X-axis represents the concentration of IgG used.



ELISA

Image 2. ELISA plate pre-coated by 2 µg/mL (100 µL/well) Human CD28 protein, mFc-His tagged protein (ABIN6961087) can bind Rabbit anti-CD28 monoclonal antibody (clone: DM63) in a linear range of 1-100 ng/mL.

A



Flow Cytometry

Image 3. Expi 293 cell line transfected with irrelevant protein were surface stained with Rabbit anti-CD28 monoclonal antibody 1 µg/mL (clone: DM63) followed by Alexa 488-conjugated anti-rabbit IgG secondary antibody.

Please check the [product details page](#) for more images. Overall 5 images are available for ABIN6964060.