

Datasheet for ABIN6964075

CLEC12A Protein (AA 65-265) (His tag)[Go to Product page](#)**2** Images

Overview

Quantity:	100 µg
Target:	CLEC12A
Protein Characteristics:	AA 65-265
Origin:	Human
Source:	HEK-293 Cells
Protein Type:	Recombinant
Purification tag / Conjugate:	This CLEC12A protein is labelled with His tag.

Product Details

Purpose:	Recombinant human CLEC12A Protein with C-terminal 6xHis tag
Specificity:	CLEC12A (His65-Ala265) 6xHis tag
Characteristics:	Extracellular Domain Protein
Purification:	Purified from cell culture supernatant by affinity chromatography
Purity:	The purity of the protein is greater than 95 % as determined by SDS-PAGE and Coomassie blue staining.

Target Details

Target:	CLEC12A
Alternative Name:	CLEC12A (CLEC12A Products)
Background:	This gene encodes a member of the C-type lectin/C-type lectin-like domain (CTL/CTLD)

Target Details

superfamily. Members of this family share a common protein fold and have diverse functions, such as cell adhesion, cell-cell signaling, glycoprotein turnover, and roles in inflammation and immune response. The protein encoded by this gene is a negative regulator of granulocyte and monocyte function. Several alternatively spliced transcript variants of this gene have been described, but the full-length nature of some of these variants has not been determined. This gene is closely linked to other CTL/CTLD superfamily members in the natural killer gene complex region on chromosome 12p13.

Molecular Weight: predicted molecular mass of 24.6 kDa after removal of the signal peptide. The apparent molecular mass of CLEC12A-His is 35-55 kDa due to glycosylation.

Gene ID: 160364

UniProt: [Q5QGZ9](#)

Application Details

Restrictions: For Research Use only

Handling

Format: Lyophilized

Buffer: Lyophilized from sterile PBS, pH 7.4. Normally 5 % - 8 % trehalose is added as protectants before lyophilization.

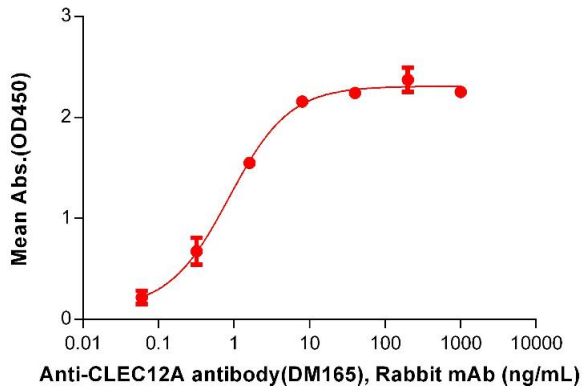
Storage: -20 °C, -80 °C

Storage Comment: Store at -20°C to -80°C for 12 months in lyophilized form. After reconstitution, if not intended for use within a month, aliquot and store at -80°C (Avoid repeated freezing and thawing).
Lyophilized proteins are shipped at ambient temperature.

Expiry Date: 12 months

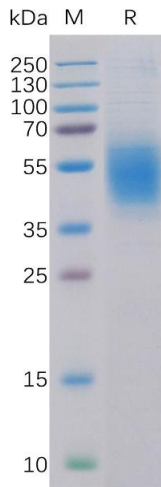
Human CLEC12A, His Tagged protein ELISA

0.2 µg of Human CLEC12A, His tagged protein per well



ELISA

Image 1. ELISA plate pre-coated by 2 µg/mL (100 µL/well) Human CA Protein, His Tag (ABIN6964075, ABIN7042405 and ABIN7042406) can bind Anti-CA antibody (DM165), Rabbit mAb in a linear range of 0.32-1.60 ng/mL.



SDS-PAGE

Image 2. Human CA Protein, His Tag on SDS-PAGE under reducing condition.