

Datasheet for ABIN6964101

EPH Receptor A2 Protein (EPHA2) (AA 24-534) (His tag)[Go to Product page](#)**2** Images

Overview

Quantity:	100 µg
Target:	EPH Receptor A2 (EPHA2)
Protein Characteristics:	AA 24-534
Origin:	Human
Source:	HEK-293 Cells
Protein Type:	Recombinant
Purification tag / Conjugate:	This EPH Receptor A2 protein is labelled with His tag.

Product Details

Purpose:	Recombinant Human EPHA2 Protein with C-terminal 6xHis tag
Specificity:	EPHA2 (Ala24-Asn534) 6xHis tag
Characteristics:	Extracellular Domain Protein
Purification:	Purified from cell culture supernatant by affinity chromatography
Purity:	The purity of the protein is greater than 95 % as determined by SDS-PAGE and Coomassie blue staining.

Target Details

Target:	EPH Receptor A2 (EPHA2)
Alternative Name:	EPHA2 (EPHA2 Products)
Background:	This gene belongs to the ephrin receptor subfamily of the protein-tyrosine kinase family. EPH

Target Details

and EPH-related receptors have been implicated in mediating developmental events, particularly in the nervous system. Receptors in the EPH subfamily typically have a single kinase domain and an extracellular region containing a Cys-rich domain and 2 fibronectin type III repeats. The ephrin receptors are divided into 2 groups based on the similarity of their extracellular domain sequences and their affinities for binding ephrin-A and ephrin-B ligands. This gene encodes a protein that binds ephrin-A ligands. Mutations in this gene are the cause of certain genetically-related cataract disorders.[provided by RefSeq, May 2010]

Molecular Weight: predicted molecular mass of 57.0 kDa after removal of the signal peptide. The apparent molecular mass of EPHA2-His is 55-70 kDa due to glycosylation.

Gene ID: 1969

UniProt: [P29317](#)

Pathways: [RTK Signaling](#)

Application Details

Restrictions: For Research Use only

Handling

Format: Lyophilized

Buffer: Lyophilized from sterile PBS, pH 7.4. Normally 5 % - 8 % trehalose is added as protectants before lyophilization.

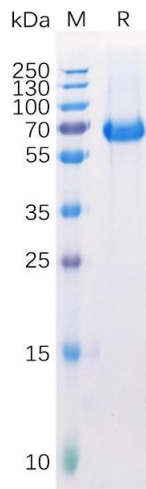
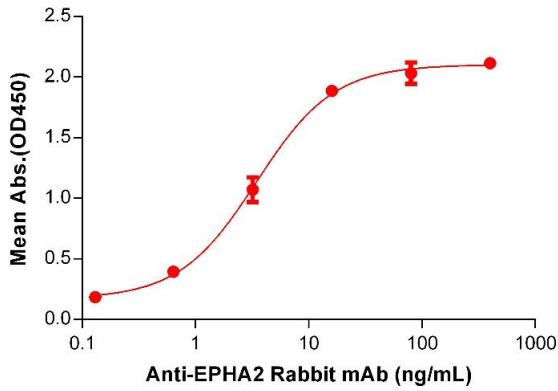
Storage: -20 °C,-80 °C

Storage Comment: Store at -20°C to -80°C for 12 months in lyophilized form. After reconstitution, if not intended for use within a month, aliquot and store at -80°C (Avoid repeated freezing and thawing). Lyophilized proteins are shipped at ambient temperature.

Expiry Date: 12 months

Human EPHA2, His tagged protein ELISA

0.1 µg of Human EPHA2, His tagged protein per well



ELISA

Image 1. ELISA plate pre-coated by 1 µg/mL (100 µL/well) Human E protein, His Tag (ABIN6964101, ABIN7042457 and ABIN7042458) can bind Anti-E Rabbit mAb in a linear range of 0.128-16 ng/mL.

SDS-PAGE

Image 2. Human E Protein, His Tag on SDS-PAGE under reducing condition.