

Datasheet for ABIN6964105  
**LAG3 Protein (AA 23-245) (His tag)**



[Go to Product page](#)

2 Images

## Overview

Quantity:	100 µg
Target:	LAG3
Protein Characteristics:	AA 23-245
Origin:	Human
Source:	HEK-293 Cells
Protein Type:	Recombinant
Purification tag / Conjugate:	This LAG3 protein is labelled with His tag.

## Product Details

Purpose:	Recombinant Human LAG3 Protein with C-terminal 6xHis tag
Specificity:	LAG3 (Leu23-Leu245) 6xHis tag
Characteristics:	Extracellular Domain Protein
Purification:	Purified from cell culture supernatant by affinity chromatography
Purity:	The purity of the protein is greater than 95 % as determined by SDS-PAGE and Coomassie blue staining.

## Target Details

Target:	LAG3
Alternative Name:	LAG3 ( <a href="#">LAG3 Products</a> )
Background:	Lymphocyte-activation protein 3 belongs to Ig superfamily and contains 4 extracellular Ig-like

## Target Details

---

domains. The LAG3 gene contains 8 exons. The sequence data, exon/intron organization, and chromosomal localization all indicate a close relationship of LAG3 to CD4. [provided by RefSeq, Jul 2008]

Molecular Weight: predicted molecular mass of 47.0 kDa after removal of the signal peptide. The apparent molecular mass of LAG3-His is 55-70 kDa due to glycosylation.

Gene ID: 3902

UniProt: [P18627](#)

Pathways: [Regulation of Leukocyte Mediated Immunity](#), [Positive Regulation of Immune Effector Process](#), [Cancer Immune Checkpoints](#)

## Application Details

---

Restrictions: For Research Use only

## Handling

---

Format: Lyophilized

Buffer: Lyophilized from sterile PBS, pH 7.4. Normally 5 % - 8 % trehalose is added as protectants before lyophilization.

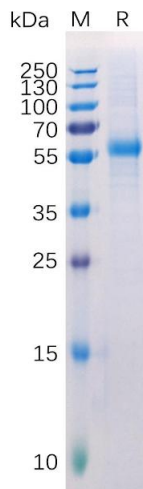
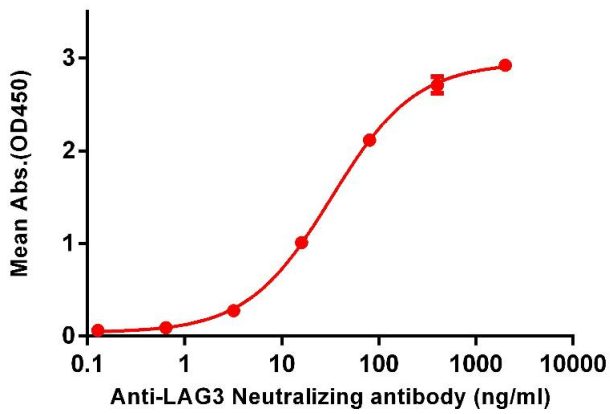
Storage: -20 °C,-80 °C

Storage Comment: Store at -20°C to -80°C for 12 months in lyophilized form. After reconstitution, if not intended for use within a month, aliquot and store at -80°C (Avoid repeated freezing and thawing).  
Lyophilized proteins are shipped at ambient temperature.

Expiry Date: 12 months

### Human LAG3, His Tagged protein ELISA

0.1 µg of Human LAG3, His Tagged protein per well



### ELISA

**Image 1.** ELISA plate pre-coated by 1 µg/mL (100 µL/well) Human , His tagged protein (ABIN6964105, ABIN7042465 and ABIN7042466) can bind Anti- Neutralizing antibody ABIN7093078 and ABIN7272608 in a linear range of 16-80 ng/mL.

### SDS-PAGE

**Image 2.** Human Protein, His Tag on SDS-PAGE under reducing condition.