

Datasheet for ABIN6964106
LAG3 Protein (AA 23-245) (Fc Tag)



[Go to Product page](#)

1 Image

Overview

Quantity:	100 µg
Target:	LAG3
Protein Characteristics:	AA 23-245
Origin:	Human
Source:	HEK-293 Cells
Protein Type:	Recombinant
Purification tag / Conjugate:	This LAG3 protein is labelled with Fc Tag.

Product Details

Purpose:	Recombinant human LAG3 Protein with C-terminal Human Fc tag
Specificity:	LAG3 (Leu23-Leu245) hFc (Glu99-Ala330)
Characteristics:	Extracellular Domain Protein
Purification:	Purified from cell culture supernatant by affinity chromatography
Purity:	The purity of the protein is greater than 95 % as determined by SDS-PAGE and Coomassie blue staining.

Target Details

Target:	LAG3
Alternative Name:	LAG3 (LAG3 Products)
Background:	Lymphocyte-activation protein 3 belongs to Ig superfamily and contains 4 extracellular Ig-like

Target Details

domains. The LAG3 gene contains 8 exons. The sequence data, exon/intron organization, and chromosomal localization all indicate a close relationship of LAG3 to CD4. [provided by RefSeq, Jul 2008]

Molecular Weight: predicted molecular mass of 72.3 kDa after removal of the signal peptide. The apparent molecular mass of LAG3-hFc is 100-130 kDa due to glycosylation.

Gene ID: 3902

UniProt: [P18627](#)

Pathways: [Regulation of Leukocyte Mediated Immunity](#), [Positive Regulation of Immune Effector Process](#), [Cancer Immune Checkpoints](#)

Application Details

Restrictions: For Research Use only

Handling

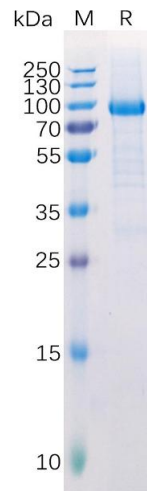
Format: Lyophilized

Buffer: Lyophilized from sterile PBS, pH 7.4. Normally 5 % - 8 % trehalose is added as protectants before lyophilization.

Storage: -20 °C, -80 °C

Storage Comment: Store at -20°C to -80°C for 12 months in lyophilized form. After reconstitution, if not intended for use within a month, aliquot and store at -80°C (Avoid repeated freezing and thawing).
Lyophilized proteins are shipped at ambient temperature.

Expiry Date: 12 months



SDS-PAGE

Image 1. Human Protein, hFc Tag on SDS-PAGE under reducing condition.