

Datasheet for ABIN6964115
PDCD1LG2 Protein (His tag)[Go to Product page](#)

1 Image

Overview

Quantity:	100 µg
Target:	PDCD1LG2
Origin:	Human
Source:	HEK-293 Cells
Protein Type:	Recombinant
Purification tag / Conjugate:	This PDCD1LG2 protein is labelled with His tag.

Product Details

Purpose:	Recombinant human PDL2 protein with C-terminal 6xHis tag
Specificity:	PDL2 (Leu20-Pro219) 6xHis tag
Characteristics:	Extracellular Domain Protein
Purification:	affinity purification
Purity:	The purity of the protein is greater than 95 % as determined by SDS-PAGE and Coomassie blue staining.

Target Details

Target:	PDCD1LG2
Alternative Name:	PDL2 (PDCD1LG2 Products)
Background:	Synonymes: B7DC, bA574F11.2, Btdc, CD273, PD-L2, PDCD1L2, PDL2 Description: Involved in the costimulatory signal, essential for T-cell proliferation and IFNG production in a PDCD1-independent manner. Interaction with PDCD1 inhibits T-cell proliferation

Target Details

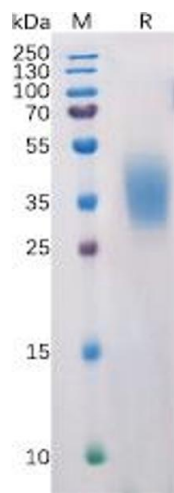
	by blocking cell cycle progression and cytokine production (By similarity).[UniProtKB/Swiss-Prot Function]
Molecular Weight:	predicted molecular mass of 23.4 kDa after removal of the signal peptide.The apparent molecular mass of PDL2-His is 35-55 kDa due to glycosylation.
Gene ID:	80380
UniProt:	Q9BQ51

Application Details

Application Notes:	Optimal working dilution should be determined by the investigator.
Restrictions:	For Research Use only

Handling

Format:	Lyophilized
Reconstitution:	Reconstitute with deionized water
Buffer:	Lyophilized from sterile PBS, pH 7.4. Normally 5 % - 8 % trehalose is added as protectants before lyophilization.
Preservative:	Without preservative
Storage:	-20 °C,-80 °C
Storage Comment:	Store at -20°C to -80°C for 12 months in lyophilized form. After reconstitution, if not intended for use within a month, aliquot and store at -80°C (Avoid repeated freezing and thawing). Lyophilized proteins are shipped at ambient temperature.
Expiry Date:	12 months



SDS-PAGE

Image 1. Human PDL2 Protein, His Tag on SDS-PAGE under reducing condition.