



[Go to Product page](#)

Datasheet for ABIN6964156  
**LRRC32 Protein (Fc Tag)**

1 Image

Overview

Quantity:	100 µg
Target:	LRRC32
Origin:	Human
Source:	HEK-293 Cells
Protein Type:	Recombinant
Purification tag / Conjugate:	This LRRC32 protein is labelled with Fc Tag.

Product Details

Purpose:	Recombinant Human LRRC32 Protein with C-terminal human Fc tag
Specificity:	LRRC32 (His20-Asn627) hFc (Glu99-Ala330)
Characteristics:	Extracellular Domain Protein
Purification:	affinity purification
Purity:	The purity of the protein is greater than 95 % as determined by SDS-PAGE and Coomassie blue staining.

Target Details

Target:	LRRC32
Alternative Name:	LRRC32 ( <a href="#">LRRC32 Products</a> )
Background:	Synonyms: D11S833E, GARP Description: This gene encodes a type I membrane protein which contains 20 leucine-rich repeats. Alterations in the chromosomal region 11q13-11q14 are involved in several

## Target Details

---

pathologies. [provided by RefSeq, Jul 2008]

Molecular Weight: predicted molecular mass of 92.1 kDa after removal of the signal peptide. The apparent molecular mass of LRRC32-hFc is 70-100 kDa due to glycosylation.

UniProt: [Q14392](#)

Pathways: [Activated T Cell Proliferation](#)

## Application Details

---

Application Notes: Optimal working dilution should be determined by the investigator.

Restrictions: For Research Use only

## Handling

---

Format: Lyophilized

Reconstitution: Reconstitute with deionized water

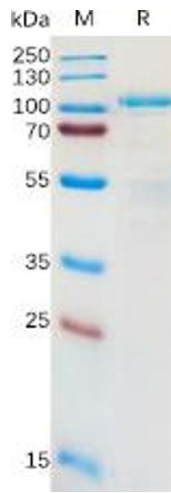
Buffer: Lyophilized from sterile PBS, pH 7.4. Normally 5 % - 8 % trehalose is added as protectants before lyophilization.

Preservative: Without preservative

Storage: -20 °C, -80 °C

Storage Comment: Store at -20°C to -80°C for 12 months in lyophilized form. After reconstitution, if not intended for use within a month, aliquot and store at -80°C (Avoid repeated freezing and thawing).  
Lyophilized proteins are shipped at ambient temperature.

Expiry Date: 12 months



### SDS-PAGE

**Image 1.** Human LRRC32 Protein, hFc Tag on SDS-PAGE under reducing condition.