

Datasheet for ABIN6964183

COLEC10 Protein (AA 28-277) (Fc Tag)



[Go to Product page](#)

1 Image

Overview

Quantity:	100 µg
Target:	COLEC10
Protein Characteristics:	AA 28-277
Origin:	Human
Source:	HEK-293 Cells
Protein Type:	Recombinant
Purification tag / Conjugate:	This COLEC10 protein is labelled with Fc Tag.

Product Details

Purpose:	Recombinant Human COLEC10 Protein with C-terminal human Fc tag
Specificity:	COLEC10 (Leu28-Lys277) hFc (Glu99-Ala330)
Characteristics:	Extracellular Domain Protein
Purification:	Purified from cell culture supernatant by affinity chromatography
Purity:	The purity of the protein is greater than 95 % as determined by SDS-PAGE and Coomassie blue staining.

Target Details

Target:	COLEC10
Alternative Name:	COLEC10 (COLEC10 Products)
Background:	This gene encodes a member of the C-lectin family, proteins that possess collagen-like

Target Details

sequences and carbohydrate recognition domains. The other members of this family are secreted proteins and bind to carbohydrate antigens on microorganisms facilitating their recognition and removal. This gene product is a cytosolic protein, a characteristic that suggests that it may have different biological functions than other C-lectins. [provided by RefSeq, Jul 2008]

Molecular Weight: predicted molecular mass of 53.8 kDa after removal of the signal peptide. The apparent molecular mass of COLEC10-hFc is 55-70 kDa due to glycosylation.

UniProt: [Q9Y6Z7](#)

Application Details

Restrictions: For Research Use only

Handling

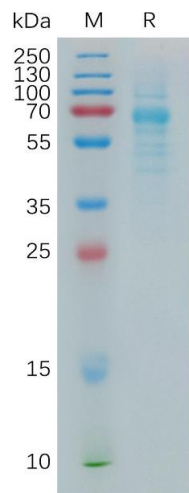
Format: Lyophilized

Buffer: Lyophilized from sterile PBS, pH 7.4. Normally 5 % - 8 % trehalose is added as protectants before lyophilization.

Storage: -20 °C, -80 °C

Storage Comment: Store at -20°C to -80°C for 12 months in lyophilized form. After reconstitution, if not intended for use within a month, aliquot and store at -80°C (Avoid repeated freezing and thawing).
Lyophilized proteins are shipped at ambient temperature.

Expiry Date: 12 months



SDS-PAGE

Image 1. Human CO Protein, hFc Tag on SDS-PAGE under reducing condition.