

Datasheet for ABIN6964344  
**FLT1 Protein (AA 27-756) (Fc Tag)**



[Go to Product page](#)

2 Images

## Overview

Quantity:	100 µg
Target:	FLT1
Protein Characteristics:	AA 27-756
Origin:	Human
Source:	HEK-293 Cells
Protein Type:	Recombinant
Purification tag / Conjugate:	This FLT1 protein is labelled with Fc Tag.

## Product Details

Purpose:	Recombinant human FLT1 protein with C-terminal human Fc tag
Specificity:	FLT1 (Ser27-Asn756) hFc (Glu99-Ala330)
Characteristics:	Extracellular Domain Protein
Purification:	Purified from cell culture supernatant by affinity chromatography
Purity:	The purity of the protein is greater than 95 % as determined by SDS-PAGE and Coomassie blue staining.

## Target Details

Target:	FLT1
Alternative Name:	FLT1 ( <a href="#">FLT1 Products</a> )
Background:	This gene encodes a member of the vascular endothelial growth factor receptor (VEGFR)

## Target Details

---

family. VEGFR family members are receptor tyrosine kinases (RTKs) which contain an extracellular ligand-binding region with seven immunoglobulin (Ig)-like domains, a transmembrane segment, and a tyrosine kinase (TK) domain within the cytoplasmic domain. This protein binds to VEGFR-A, VEGFR-B and placental growth factor and plays an important role in angiogenesis and vasculogenesis. Expression of this receptor is found in vascular endothelial cells, placental trophoblast cells and peripheral blood monocytes. Multiple transcript variants encoding different isoforms have been found for this gene. Isoforms include a full-length transmembrane receptor isoform and shortened, soluble isoforms. The soluble isoforms are associated with the onset of pre-eclampsia.[provided by RefSeq, May 2009]

---

Molecular Weight: predicted molecular mass of 108.3 kDa after removal of the signal peptide. The apparent molecular mass of FLT1-hFc is 130-180 kDa due to glycosylation.

---

UniProt: [P17948](#)

---

Pathways: [RTK Signaling, Signaling Events mediated by VEGFR1 and VEGFR2, VEGFR1 Specific Signals](#)

## Application Details

---

Restrictions: For Research Use only

## Handling

---

Format: Lyophilized

---

Buffer: Lyophilized from sterile PBS, pH 7.4. Normally 5 % - 8 % trehalose is added as protectants before lyophilization.

---

Storage: -20 °C,-80 °C

---

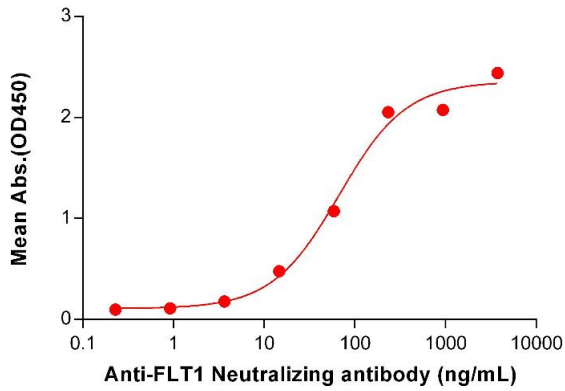
Storage Comment: Store at -20°C to -80°C for 12 months in lyophilized form. After reconstitution, if not intended for use within a month, aliquot and store at -80°C (Avoid repeated freezing and thawing).  
Lyophilized proteins are shipped at ambient temperature.

---

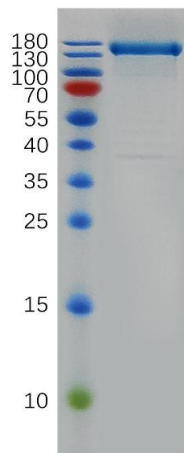
Expiry Date: 12 months

### Human FLT1, hFc Tagged protein ELISA

0.2 µg of Human FLT1, hFc tagged protein per well



kDa M R



### ELISA

**Image 1.** ELISA plate pre-coated by 2 µg/mL (100 µL/well) Human Protein, hFc Tag (ABIN6964344, ABIN7042795 and ABIN7042796) can bind Anti- Neutralizing antibody ABIN7478023 and ABIN7490992 in a linear range of 3.66-234.38 ng/mL.

### SDS-PAGE

**Image 2.** Human Protein, hFc Tag on SDS-PAGE under reducing condition.