

Datasheet for ABIN6971349  
**anti-AATF antibody (AA 1-39)**



[Go to Product page](#)

2 Images

## Overview

Quantity:	100 µg
Target:	AATF
Binding Specificity:	AA 1-39
Reactivity:	Human, Mouse
Host:	Rat
Clonality:	Monoclonal
Application:	Western Blotting (WB), Immunofluorescence (IF)

## Product Details

Immunogen:	This antibody was raised against peptide comprising amino acids 1-39 of mouse AATF (Apoptosis-antagonizing transcription factor) (NP_062790).
Clone:	1B2D8
Isotype:	IgG2a
Characteristics:	AATF/Che-1, or Apoptosis-antagonizing Transcription Factor is a key regulator of apoptosis through its interaction with MAP3K12 (DLK), as well as regulation of gene transcription and cell proliferation through interaction with RNA polymerase II. AATF/Che-1 may promote cell proliferation by acting as a competitor of histone deacetylase 1 (HDAC1) interaction with the growth inhibiting protein pRb. AATF / Che-1 binding to pRb may displace HDAC1 from RB1/E2F complexes, leading to activation of E2F target genes and cell cycle progression. AATF / Che-1 antibody (mAb) (Clone 1B2D8) was raised in a Rat host. It has been validated for use in Immunofluorescence and Western blot, it has been shown to react with Human and Mouse samples.

## Product Details

---

Purification: Protein A Chromatography

## Target Details

---

Target: AATF

Alternative Name: AATF / Che-1 ([AATF Products](#))

NCBI Accession: [NP\\_062790](#)

Pathways: [Neurotrophin Signaling Pathway](#), [SARS-CoV-2 Protein Interactome](#)

## Application Details

---

Application Notes: Optimal working dilution should be determined by the investigator.

Restrictions: For Research Use only

## Handling

---

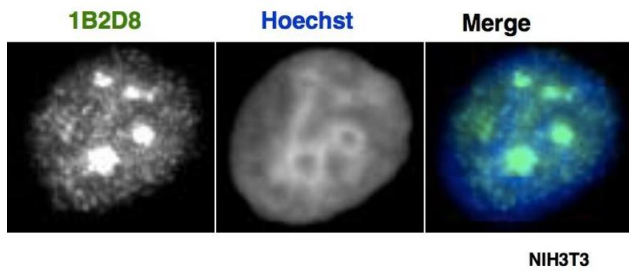
Buffer: Purified IgG in PBS with 30 % glycerol and 0.035 % sodium azide.

Preservative: Sodium azide

Precaution of Use: This product contains Sodium azide: a POISONOUS AND HAZARDOUS SUBSTANCE which should be handled by trained staff only.

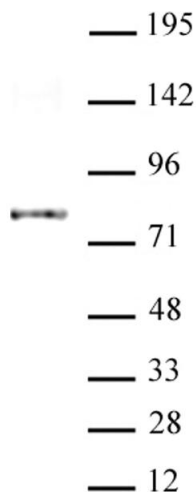
Storage: -20 °C

Storage Comment: Avoid repeated freeze/thaw cycles by aliquoting items into single-use fractions for storage at -20°C for up to 2 years. Keep all reagents on ice when not in storage.



### Immunofluorescence

**Image 1.** AATF / Che-1 antibody (mAb) tested by immunofluorescence. Left: Formaldehyde-fixed NIH3T3 cells stained with AATF / Che-1 antibody. Center: same cells stained with Hoechst (DNA stain). Right: merge of images.



### Western Blotting

**Image 2.** AATF / Che-1 antibody (mAb) tested by Western Blot. AATF / Che-1 was detected in 20  $\mu$ g of HeLa cell nuclear extract with AATC / Che-1 antibody at 2  $\mu$ g /  $\mu$ l. MW: 80 kDa