

Datasheet for ABIN6971353
anti-Actin-Like 6B antibody (N-Term)[Go to Product page](#)

1 Image

Overview

Quantity:	100 µL
Target:	Actin-Like 6B (ACTL6B)
Binding Specificity:	N-Term
Reactivity:	Human
Host:	Rabbit
Clonality:	Polyclonal
Conjugate:	This Actin-Like 6B antibody is un-conjugated
Application:	Western Blotting (WB)

Product Details

Immunogen:	This antibody was raised against a peptide within the N-terminal region of human ACTL6B.
Isotype:	IgG
Characteristics:	<p>ACTL6B (Actin-Like 6B) Belongs to the chromatin remodeling brain-specific BAF (bBAF) complex, as such plays a role in remodeling mononucleosomes in an ATP-dependent fashion. Belongs to the neuron-specific chromatin remodeling complex (nBAF complex) and is required for postmitotic neural development and dendritic outgrowth. During neural development a switch from a stem/progenitor to a post-mitotic chromatin remodeling mechanism occurs as neurons exit the cell cycle and become committed to their adult state. The transition from proliferating neural stem/progenitor cells to post-mitotic neurons requires a switch in subunit composition of the npBAF and nBAF complexes. As neural progenitors exit mitosis and differentiate into neurons, npBAF complexes which contain ACTL6A/BAF53A and PHF10/BAF45A, are exchanged for homologous alternative ACTL6B/BAF53B and</p>

Product Details

DPF1/BAF45B or DPF3/BAF45C subunits in neuron-specific complexes (nBAF). The npBAF complex is essential for the self-renewal/proliferative capacity of the multipotent neural stem cells. The nBAF complex along with CREST plays a role regulating the activity of genes essential for dendrite growth. ACTL6B/BAF53B is not essential for assembly of the nBAF complex but is required for targeting the complex and CREST to the promoter of genes essential for dendritic growth (By similarity). ACTL6B antibody (pAb) was raised in a Rabbit host. It has been validated for use in Western blot, it has been shown to react with Human samples.

Purification: Affinity Purified

Target Details

Target: Actin-Like 6B (ACTL6B)

Alternative Name: ACTL6B ([ACTL6B Products](#))

Molecular Weight: 50 kDa

NCBI Accession: [NP_057272](#)

Application Details

Application Notes: Optimal working dilution should be determined by the investigator.

Restrictions: For Research Use only

Handling

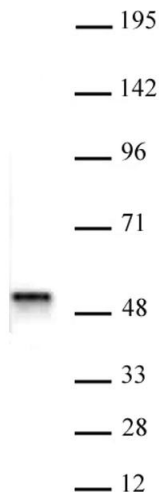
Buffer: Purified IgG in PBS with 30 % glycerol and 0.035 % sodium azide.

Preservative: Sodium azide

Precaution of Use: This product contains Sodium azide: a POISONOUS AND HAZARDOUS SUBSTANCE which should be handled by trained staff only.

Storage: -20 °C

Storage Comment: Avoid repeated freeze/thaw cycles by aliquoting items into single-use fractions for storage at -20°C for up to 2 years. Keep all reagents on ice when not in storage.



Western Blotting

Image 1. ACTL6B antibody (pAb) tested by Western blot. Whole cell extract of SH-SY5Y cells (12 µg) probed with ACTL6B antibody (pAb) at a dilution of 1:500.