

Datasheet for ABIN6971405  
**anti-ATAD2 antibody (C-Term)**[Go to Product page](#)

## 2 Images

## Overview

Quantity:	100 µL
Target:	ATAD2
Binding Specificity:	C-Term
Reactivity:	Human
Host:	Rabbit
Clonality:	Polyclonal
Conjugate:	This ATAD2 antibody is un-conjugated
Application:	Western Blotting (WB), Immunoprecipitation (IP)

## Product Details

Immunogen:	This antibody was raised against a peptide within the C-terminal region of human ATAD2.
Isotype:	IgG
Characteristics:	ATAD2 (ATPase family AAA domain-containing protein 2) may be a transcriptional coactivator of the nuclear receptor ESR1 required to induce the expression of a subset of estradiol target genes, such as CCND1, MYC and E2F1. May play a role in the recruitment or occupancy of CREBBP at some ESR1 target gene promoters. May be required for histone hyperacetylation. Involved in the estrogen-induced cell proliferation and cell cycle progression of breast cancer cells. ATAD2 antibody (pAb) was raised in a Rabbit host. It has been validated for use in Immunoprecipitation and Western blot, it has been shown to react with Human samples.
Purification:	Affinity Purified

## Target Details

Target:	ATAD2
Alternative Name:	ATAD2 ( <a href="#">ATAD2 Products</a> )
Molecular Weight:	160 kDa
NCBI Accession:	<a href="#">NP_054828</a>

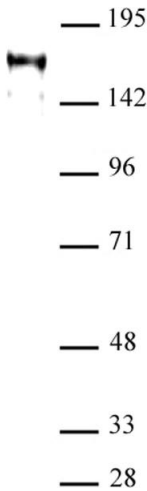
## Application Details

Application Notes:	Optimal working dilution should be determined by the investigator.
Restrictions:	For Research Use only

## Handling

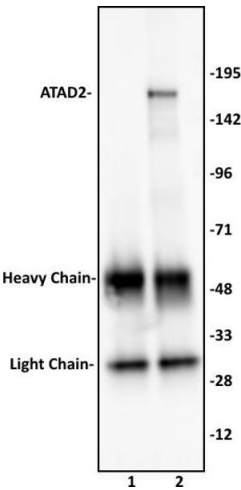
Buffer:	Purified IgG in PBS with 30 % glycerol and 0.035 % sodium azide.
Preservative:	Sodium azide
Precaution of Use:	This product contains Sodium azide: a POISONOUS AND HAZARDOUS SUBSTANCE which should be handled by trained staff only.
Storage:	-20 °C
Storage Comment:	Avoid repeated freeze/thaw cycles by aliquoting items into single-use fractions for storage at -20°C for up to 2 years. Keep all reagents on ice when not in storage.

## Images



### Western Blotting

**Image 1.** ATAD2 antibody (pAb) tested by Western blot. ATAD2 detection by Western blot. The analysis was performed using 40 µg Jurkat nuclear cell extract and CENP-B at a 1:1,000 dilution.



**Immunoprecipitation**

**Image 2.** ATAD2 antibody (pAb) tested by Immunoprecipitation. 10  $\mu$ L of ATAD2 antibody was used to immunoprecipitate ATAD2 from 250  $\mu$ g of Jurkat nuclear cell extract (lane 2). 10  $\mu$ L of rabbit IgG was used as a negative control (lane 1). The immunoprecipitated protein was detected by Western blotting using the ATAD2 antibody at a dilution of 1:1,000.