

Datasheet for ABIN6971417
anti-ATRX antibody (C-Term)[Go to Product page](#)

1 Image

Overview

Quantity:	100 µL
Target:	ATRX
Binding Specificity:	C-Term
Reactivity:	Human
Host:	Rabbit
Clonality:	Polyclonal
Application:	Western Blotting (WB)

Product Details

Immunogen:	This ATRX antibody was raised against a peptide within the C-terminus of human ATRX.
Isotype:	IgG
Characteristics:	<p>ATRX (alpha thalassemia/mental retardation syndrome X-linked protein, X-linked helicase II, XNP) is a transcriptional regulator and a member of the SWI/SNF family of chromatin remodeling proteins. It contains an SNF2 domain and helicase domain, and a PHD finger. ATRX undergoes cell cycle-dependent phosphorylation, which regulates its nuclear matrix and chromatin association, and suggests its involvement in interphase gene regulation and chromosomal segregation in mitosis. Mutations of the ATRX gene are associated with an X-linked mental retardation syndrome most often accompanied by alpha-thalassemia (ATRX) syndrome. These mutations have been shown to cause diverse changes in the pattern of DNA methylation, which may provide a link between chromatin remodeling, DNA methylation, and gene expression in developmental processes. ATRX antibody (pAb) was raised in a Rabbit host. It has been validated for use in Western blot, it has been shown to react with Human samples.</p>

Product Details

Purification: Affinity Purified

Target Details

Target: ATRX

Alternative Name: ATRX ([ATRX Products](#))

Molecular Weight: 300 kDa

NCBI Accession: [NP_000480](#)

Application Details

Application Notes: Optimal working dilution should be determined by the investigator.

Restrictions: For Research Use only

Handling

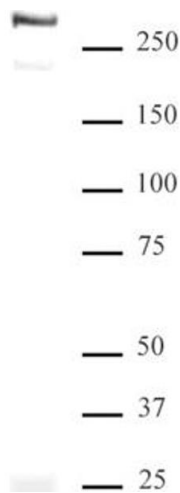
Buffer: Purified IgG in 70 mM Tris (pH 8), 105 mM NaCl, 31 mM glycine, 0.07 mM EDTA, 30 % glycerol and 0.035 % sodium azide.

Preservative: Sodium azide

Precaution of Use: This product contains Sodium azide: a POISONOUS AND HAZARDOUS SUBSTANCE which should be handled by trained staff only.

Storage: -20 °C

Storage Comment: Avoid repeated freeze/thaw cycles by aliquoting items into single-use fractions for storage at -20°C for up to 2 years. Keep all reagents on ice when not in storage.



Western Blotting

Image 1. Western blot of ATRX antibody. Nuclear extract of CCF-STGG1 cells (40 µg per lane) probed with ATRX antibody (pAb) at a dilution of 1:2,500.