

Datasheet for ABIN6971455
anti-CTCFL antibody (N-Term)[Go to Product page](#)

2 Images

Overview

Quantity:	100 µL
Target:	CTCFL
Binding Specificity:	N-Term
Reactivity:	Human
Host:	Rabbit
Clonality:	Polyclonal
Application:	Western Blotting (WB), ChIP DNA-Sequencing (ChIP-seq), Chromatin Immunoprecipitation (ChIP)

Product Details

Immunogen:	This CTBP antibody was raised against a peptide within the N-terminal region of human BORIS.
Isotype:	IgG
Characteristics:	<p>BORIS (Brother of Regulator of Imprinted Sites) / CTCFL (CTCF-like) is a zinc-finger DNA binding protein that acts as a chromatin insulator and a paralog of the CTCF protein. Normally, BORIS / CTCFL is expressed only in primary spermatocytes and is thought to play a role in resetting DNA methylation marks during the differentiation of male germ cells. BORIS / CTCFL is also expressed in many cancers and may serve a pro-proliferative function. Boris / CTCFL antibody (pAb) was raised in a Rabbit host. It has been validated for use in Chromatin Immunoprecipitation, ChIP-Seq and Western blot, it has been shown to react with Human samples.</p>
Purification:	Affinity Purified

Target Details

Target:	CTCFL
Alternative Name:	Boris / CTCFL (CTCFL Products)
Molecular Weight:	96 kDa
NCBI Accession:	NP_542185

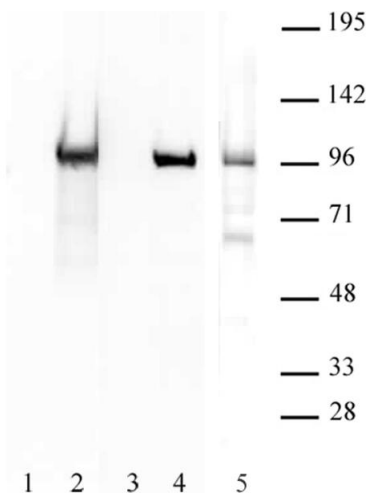
Application Details

Application Notes:	Optimal working dilution should be determined by the investigator.
Restrictions:	For Research Use only

Handling

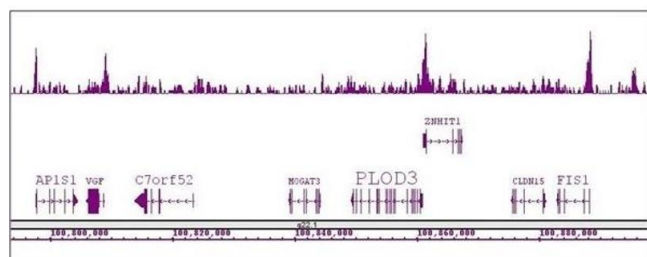
Buffer:	Purified IgG in 70 mM Tris (pH 8), 105 mM NaCl, 31 mM glycine, 0.07 mM EDTA, 30 % glycerol and 0.035 % sodium azide.
Preservative:	Sodium azide
Precaution of Use:	This product contains Sodium azide: a POISONOUS AND HAZARDOUS SUBSTANCE which should be handled by trained staff only.
Storage:	-20 °C
Storage Comment:	Avoid repeated freeze/thaw cycles by aliquoting items into single-use fractions for storage at -20°C for up to 2 years. Keep all reagents on ice when not in storage.

Images



Western Blotting

Image 1. BORIS / CTCFL antibody (pAb) tested by Western blot. 20 µg of LNCaP nuclear extract was probed with BORIS / CTCFL antibody at 1:1,000.



ChIP DNA-Sequencing

Image 2. Boris / CTCFL antibody (pAb) tested by ChIP-Seq. ChIP was performed using the ChIP-IT High Sensitivity Kit with 30 µg of chromatin from human testis and 2 µL of antibody. ChIP DNA was sequenced on the Illumina HiSeq and 20 million sequence tags were mapped to identify Boris / CTCFL binding sites. The image shows binding across a region of chromosome 7. You can view the complete data set in the UCSC Genome Browser, starting at this specific location, [here](#).