

Datasheet for ABIN6971488
anti-CABIN1 antibody (C-Term)



[Go to Product page](#)

1 Image

Overview

Quantity:	100 µL
Target:	CABIN1
Binding Specificity:	C-Term
Reactivity:	Human
Host:	Rabbit
Clonality:	Polyclonal
Conjugate:	This CABIN1 antibody is un-conjugated
Application:	Western Blotting (WB), Immunoprecipitation (IP)

Product Details

Immunogen:	This antibody was raised against a peptide within the C-terminal region of human CABIN1.
Isotype:	IgG
Characteristics:	<p>CABIN1 (calcineurin-binding protein 1) may be required for replication-independent chromatin assembly. May serve as a negative regulator of T-cell receptor (TCR) signaling via inhibition of calcineurin. Inhibition of activated calcineurin is dependent on both PKC and calcium signals. Component of a complex that includes at least ASF1A, CABIN1, HIRA, Histone H3.3 and UBN1. CABIN1 antibody (pAb) was raised in a Rabbit host. It has been validated for use in Immunoprecipitation and Western blot, it has been shown to react with Human samples.</p>
Purification:	Affinity Purified

Target Details

Target:	CABIN1
Alternative Name:	CABIN1 (CABIN1 Products)
Molecular Weight:	280 kDa
NCBI Accession:	NP_036427

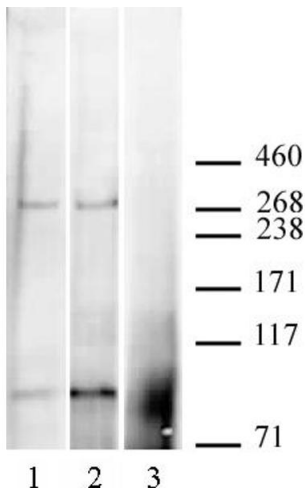
Application Details

Application Notes:	Optimal working dilution should be determined by the investigator.
Restrictions:	For Research Use only

Handling

Buffer:	Purified IgG in PBS with 30 % glycerol and 0.035 % sodium azide.
Preservative:	Sodium azide
Precaution of Use:	This product contains Sodium azide: a POISONOUS AND HAZARDOUS SUBSTANCE which should be handled by trained staff only.
Storage:	-20 °C
Storage Comment:	Avoid repeated freeze/thaw cycles by aliquoting items into single-use fractions for storage at -20°C for up to 2 years. Keep all reagents on ice when not in storage.

Images



Western Blotting

Image 1. CABIN1 antibody (pAb) tested by Immunoprecipitation / Western blot. 10 µg of HIRA antibody (mAb), (lane 1) or 10 µL of CABIN1 antibody (pAb) (lane 2) was used to immunoprecipitate CABIN1 from 1 mg of U2OS nuclear extract. 10 µg of rabbit IgG was also used as a negative control (lane 3). The immunoprecipitated protein was detected by Western blotting using CABIN1 antibody at a dilution of 1:500.