

Datasheet for ABIN6971490

**anti-CHAF1B antibody****2** Images[Go to Product page](#)

## Overview

Quantity:	100 µg
Target:	CHAF1B
Reactivity:	Human, Mouse
Host:	Mouse
Clonality:	Monoclonal
Conjugate:	This CHAF1B antibody is un-conjugated
Application:	Western Blotting (WB), Immunofluorescence (IF), Immunoprecipitation (IP), Immunocytochemistry (ICC)

## Product Details

Immunogen:	The CAF-1 p60 antibody was raised against full-length CAF-1 purified from human 293 cells.
Clone:	24
Isotype:	IgG1
Characteristics:	<p>CAF-1 p60 (Chromatin assembly factor-1 p60 subunit, CAF1B, CHAF1B) is a subunit of the CAF-1 complex that is required for the assembly of nucleosomes onto newly replicated DNA. Specifically, CAF-1 assists in the loading of the H3-H4 tetramer and may be involved in DNA damage repair. CAF-1 p60 is a WD-repeat containing protein related to HIRA. CAF-1 p60 antibody (mAb) (Clone 24) was raised in a Mouse host. It has been validated for use in Immunocytochemistry, Immunofluorescence, Immunoprecipitation and Western blot, it has been shown to react with Human and Mouse samples.</p>
Purification:	Protein G Chromatography

## Target Details

Target:	CHAF1B
Alternative Name:	CAF-1 p60 ( <a href="#">CHAF1B Products</a> )
Molecular Weight:	60 kDa
NCBI Accession:	<a href="#">NP_005432</a>

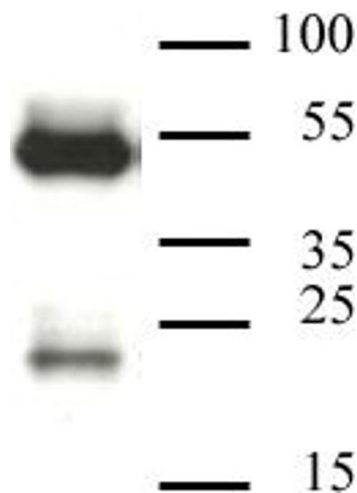
## Application Details

Application Notes:	Optimal working dilution should be determined by the investigator.
Restrictions:	For Research Use only

## Handling

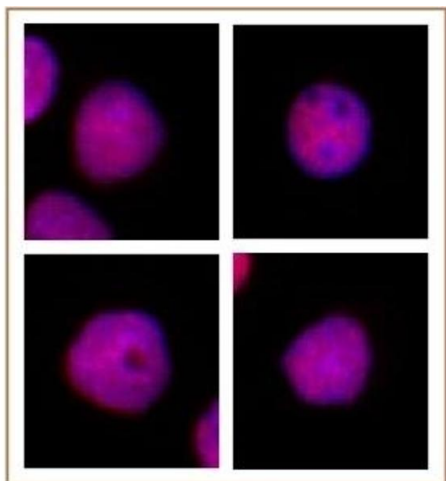
Buffer:	Purified IgG in 70 mM Tris ( pH 8), 105 mM NaCl, 31 mM glycine, 0.07 mM EDTA, 30 % glycerol and 0.035 % sodium azide.
Preservative:	Sodium azide
Precaution of Use:	This product contains Sodium azide: a POISONOUS AND HAZARDOUS SUBSTANCE which should be handled by trained staff only.
Storage:	-20 °C
Storage Comment:	Avoid repeated freeze/thaw cycles by aliquoting items into single-use fractions for storage at -20°C for up to 2 years. Keep all reagents on ice when not in storage.

## Images



### Western Blotting

**Image 1.** CAF-1 p60 antibody (mAb) tested by Western blot. CAF-1 p60 (mAb) detection by Western blot. The analysis was performed using WT mouse testis and the CAF-1 p60 (mAb) at a 1 µg/mL dilution.



#### Immunofluorescence

**Image 2.** CAF-1 p60 antibody (mAb) tested by immunofluorescence. Formaldehyde fixed HeLa cells stained with CAF-1 p60 antibody at a 1:2,000 dilution.