

Datasheet for ABIN6971507  
**anti-CBX8 antibody (C-Term)**



[Go to Product page](#)

1 Image

## Overview

Quantity:	100 µL
Target:	CBX8
Binding Specificity:	C-Term
Reactivity:	Human
Host:	Rabbit
Clonality:	Polyclonal
Conjugate:	This CBX8 antibody is un-conjugated
Application:	Western Blotting (WB)

## Product Details

Immunogen:	This CBX8 antibody was raised against a peptide corresponding to the C-terminal region of human CBX8 (Chromobox protein homolog 8).
Isotype:	IgG
Characteristics:	CBX8 (chromobox homolog 8, PC3, RC1) is a Component of the Polycomb group (PcG) multiprotein PRC1 complex, a complex required to maintain the transcriptionally repressive state of many genes, including Hox genes, throughout development. PcG PRC1 complex acts via chromatin remodeling and modification of histones, it mediates monoubiquitination of histone H2A 'Lys-119', rendering chromatin heritably changed in its expressibility. CBX8 antibody (pAb) was raised in a Rabbit host. It has been validated for use in Western blot, it has been shown to react with Human samples.
Purification:	Affinity Purified

## Target Details

Target:	CBX8
Alternative Name:	CBX8 (CBX8 Products)
Molecular Weight:	45 kDa
NCBI Accession:	NP_065700

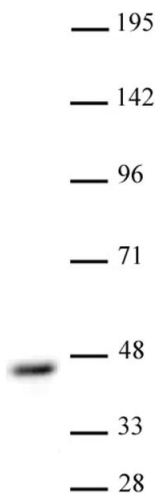
## Application Details

Application Notes:	Optimal working dilution should be determined by the investigator.
Restrictions:	For Research Use only

## Handling

Buffer:	Purified IgG in PBS with 30 % glycerol and 0.035 % sodium azide.
Preservative:	Sodium azide
Precaution of Use:	This product contains Sodium azide: a POISONOUS AND HAZARDOUS SUBSTANCE which should be handled by trained staff only.
Storage:	-20 °C
Storage Comment:	Avoid repeated freeze/thaw cycles by aliquoting items into single-use fractions for storage at -20°C for up to 2 years. Keep all reagents on ice when not in storage.

## Images



### Western Blotting

**Image 1.** CBX8 antibody (pAb) tested by Western blot. Whole-cell extract of HeLa cells (20 µg) probed with CBX8 antibody (1:500).