

Datasheet for ABIN6971523
anti-CENPB antibody (C-Term)[Go to Product page](#)

1 Image

Overview

Quantity:	100 µg
Target:	CENPB
Binding Specificity:	C-Term
Reactivity:	Human
Host:	Rabbit
Clonality:	Polyclonal
Conjugate:	This CENPB antibody is un-conjugated
Application:	Immunofluorescence (IF), Immunocytochemistry (ICC)

Product Details

Immunogen:	This CENP-B antibody was raised against a recombinant protein corresponding to the C-terminal region of human CENP-B.
Isotype:	IgG
Characteristics:	<p>CENP-B (Centromere protein B) is a protein associated with centromeric DNA and crucial to the formation of the special chromatin structure on the α-satellite DNA repeats of the human centromere. CENP-B specifically binds a 17 bp sequence which may function as a cis-element for centromere-specific nucleosome assembly. CENP-B plays a role in the organization of centromere satellite DNA into a higher order structure, directing centromere formation and kinetochore assembly in mammalian chromosomes. CENP-B antibody (pAb) was raised in a Rabbit host. It has been validated for use in Immunocytochemistry and Immunofluorescence, it has been shown to react with Human samples.</p>

Product Details

Purification: Protein A Chromatography

Target Details

Target: CENPB

Alternative Name: CENP-B ([CENPB Products](#))

Molecular Weight: 67 kDa

NCBI Accession: [NP_001801](#)

Application Details

Application Notes: Optimal working dilution should be determined by the investigator.

Restrictions: For Research Use only

Handling

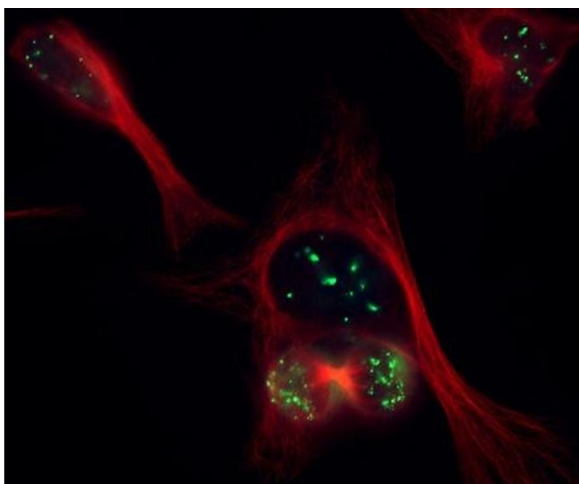
Buffer: Purified rabbit IgG in PBS with 30 % glycerol and 0.035 % sodium azide.

Preservative: Sodium azide

Precaution of Use: This product contains Sodium azide: a POISONOUS AND HAZARDOUS SUBSTANCE which should be handled by trained staff only.

Storage: -20 °C

Storage Comment: Avoid repeated freeze/thaw cycles by aliquoting items into single-use fractions for storage at -20°C for up to 2 years. Keep all reagents on ice when not in storage.



Immunofluorescence

Image 1. CENP-B antibody (pAb) tested by immunofluorescence. Staining of HeLa cells with CENP-B pAb at a 1 μ g/mL dilution (green) and α -tubulin (red) at 1 μ g/mL.