

Datasheet for ABIN6971525  
**anti-CENPB antibody (C-Term)**[Go to Product page](#)

## 2 Images

## Overview

Quantity:	100 µL
Target:	CENPB
Binding Specificity:	C-Term
Reactivity:	Human
Host:	Rabbit
Clonality:	Polyclonal
Conjugate:	This CENPB antibody is un-conjugated
Application:	Western Blotting (WB), Immunofluorescence (IF), Immunocytochemistry (ICC), Immunoprecipitation (IP)

## Product Details

Immunogen:	This CENP-B antibody was raised against a recombinant protein corresponding to the C-terminal region of human CENP-B.
Isotype:	IgG
Characteristics:	CENP-B (Centromere protein B) is a protein associated with centromeric DNA and crucial to the formation of the special chromatin structure on the a-satellite DNA repeats of the human centromere. CENP-B specifically binds a 17 bp sequence which may function as a cis-element for centromere-specific nucleosome assembly. CENP-B plays a role in the organization of centromere satellite DNA into a higher order structure, directing centromere formation and kinetochore assembly in mammalian chromosomes. CENP-B antibody (pAb) was raised in a Rabbit host. It has been validated for use in Immunocytochemistry, Immunofluorescence, Immunoprecipitation and Western blot, it has been shown to react with Human samples.

## Product Details

---

Purification: Affinity Purified

## Target Details

---

Target: CENPB

Alternative Name: CENP-B ([CENPB Products](#))

Molecular Weight: 80 kDa

NCBI Accession: [NP\\_001801](#)

## Application Details

---

Application Notes: Optimal working dilution should be determined by the investigator.

Restrictions: For Research Use only

## Handling

---

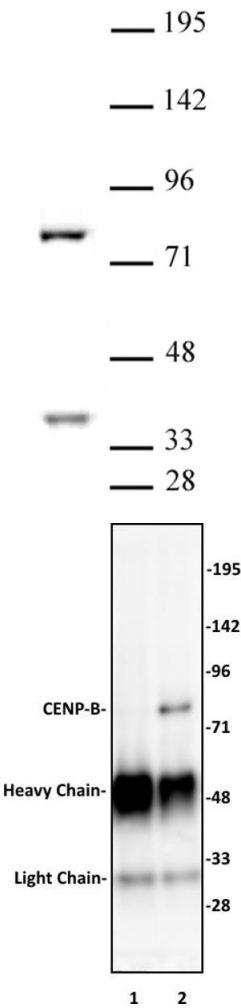
Buffer: Purified IgG in PBS with 30 % glycerol and 0.035 % sodium azide.

Preservative: Sodium azide

Precaution of Use: This product contains Sodium azide: a POISONOUS AND HAZARDOUS SUBSTANCE which should be handled by trained staff only.

Storage: -20 °C

Storage Comment: Avoid repeated freeze/thaw cycles by aliquoting items into single-use fractions for storage at -20°C for up to 2 years. Keep all reagents on ice when not in storage.



**Western Blotting**

**Image 1.** CENP-B antibody (pAb) tested by Western blot. CENP-B detection by Western blot. The analysis was performed using 30 µg HeLa nuclear cell extract and CENP-B at a 1:500 dilution.

**Immunoprecipitation**

**Image 2.** CENP-B antibody (pAb) tested by Immunoprecipitation. 10 µL of CENP-B antibody was used to immunoprecipitate CENP-B from 250 µg of HeLa nuclear cell extract (lane 2). 10 µL of rabbit IgG was used as a negative control (lane 1). The immunoprecipitated protein was detected by Western blotting using the CENP-B antibody at a dilution of 1:500.