

Datasheet for ABIN6971539
anti-CHD5 antibody (C-Term)

2 Images

[Go to Product page](#)

Overview

Quantity:	100 µg
Target:	CHD5
Binding Specificity:	C-Term
Reactivity:	Human, Mouse
Host:	Rat
Clonality:	Monoclonal
Conjugate:	This CHD5 antibody is un-conjugated
Application:	Western Blotting (WB), Immunofluorescence (IF), Immunocytochemistry (ICC)

Product Details

Immunogen:	This antibody was raised against a peptide within the C-terminal region of mouse Chd5.
Clone:	5A10
Isotype:	IgG2a
Characteristics:	<p>Chd5 (Chromodomain Helicase DNA Binding Protein 5) is member of the CHD subfamily of chromatin remodeling SWI/SNF proteins, containing chromodomains and a SNF2-like ATPase/helicase domain, that play a role in chromatin remodeling and gene transcription. Chd5 is also a potential tumor suppressor that may play a role in neuronal development. Chd5 antibody (mAb) (Clone 5A10) was raised in a Rat host. It has been validated for use in Immunocytochemistry, Immunofluorescence and Western blot, it has been shown to react with Human and Mouse samples.</p>
Purification:	Protein G Chromatography

Target Details

Target:	CHD5
Alternative Name:	Chd5 (CHD5 Products)
Molecular Weight:	260 kDa
NCBI Accession:	NP_001074845

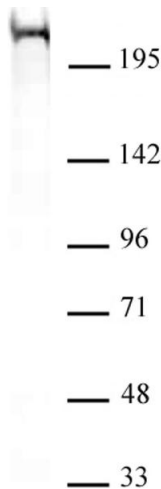
Application Details

Application Notes:	Optimal working dilution should be determined by the investigator.
Restrictions:	For Research Use only

Handling

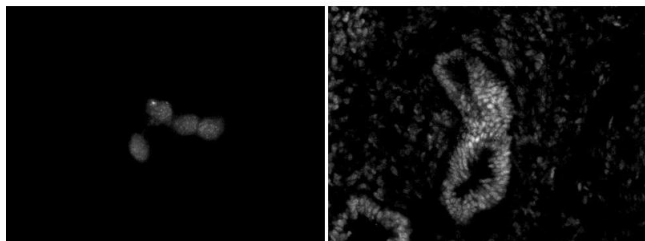
Buffer:	Purified IgG in PBS with 30 % glycerol and 0.035 % sodium azide.
Preservative:	Sodium azide
Precaution of Use:	This product contains Sodium azide: a POISONOUS AND HAZARDOUS SUBSTANCE which should be handled by trained staff only.
Storage:	-20 °C
Storage Comment:	Avoid repeated freeze/thaw cycles by aliquoting items into single-use fractions for storage at -20°C for up to 2 years. Keep all reagents on ice when not in storage.

Images



Western Blotting

Image 1. Chd5 antibody (mAb) (Clone 5A10) tested by Western blot. Chd5 antibody detection by Western blot. The analysis was performed using 40 µg of HeLa nuclear extract and Chd5 antibody at a 2 µg/mL dilution.



Immunofluorescence

Image 2. Chd5 antibody (mAb) (Clone 5A10) tested by immunofluorescence. Left: HeLa cells. Right: E12.5 mouse gut. Both stained with Chd5 antibody.